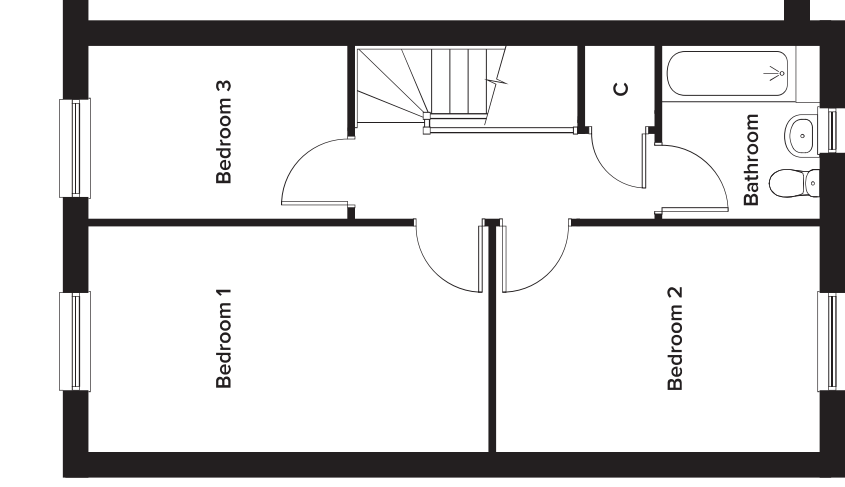
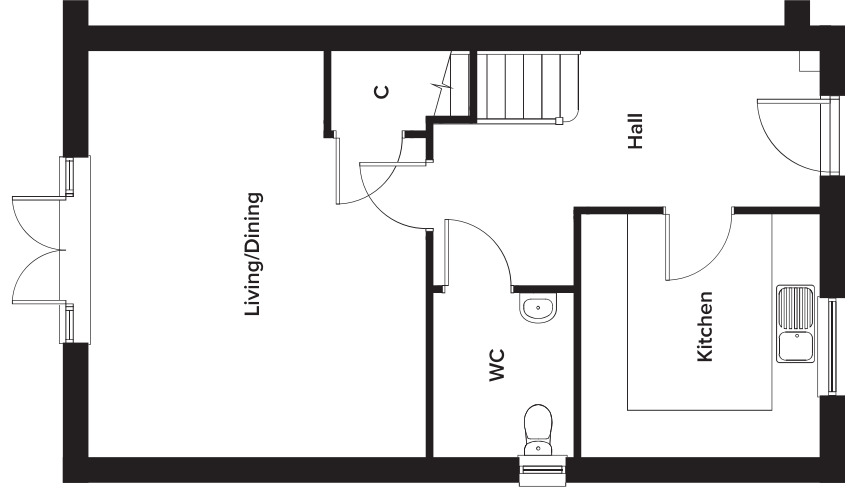


Rosewood Phase 2, Maidstone, Kent

3 Bedroom End Of Terrace

Plots 271 and 276



Ground Floor

Kitchen	3.10m x 3.05m	10' 2" x 10' 0"
Living/Dining	5.18m x 4.31m	17' 0" x 14' 2"
WC	2.10m x 1.79m	6' 11" x 5' 11"

First Floor

Bedroom 1	2.89m x 5.11m	9' 6" x 16' 10"
Bedroom 2	2.89m x 4.13m	9' 6" x 13' 7"
Bedroom 3	2.20m x 3.31m	7' 3" x 10' 10"
Bathroom	2.20m x 2.01m	7' 3" x 6' 7"

Please note: dimensions are approximate +/- 50mm and are not intended to be used for carpet sizes, appliance spaces or furniture items.