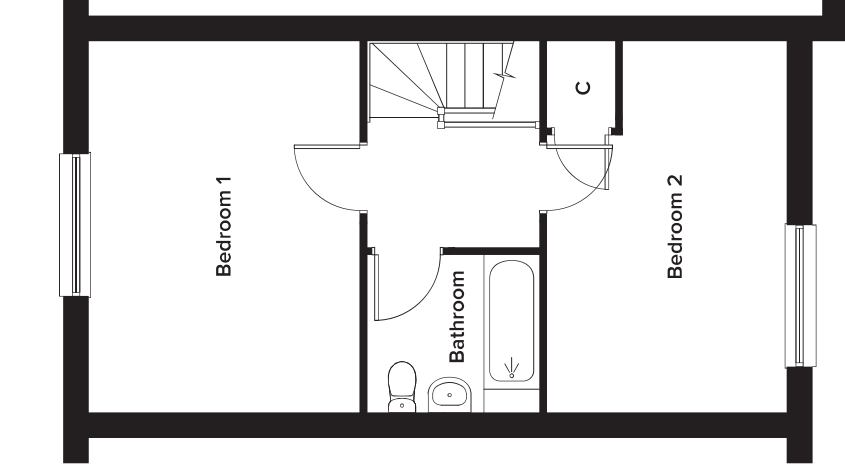
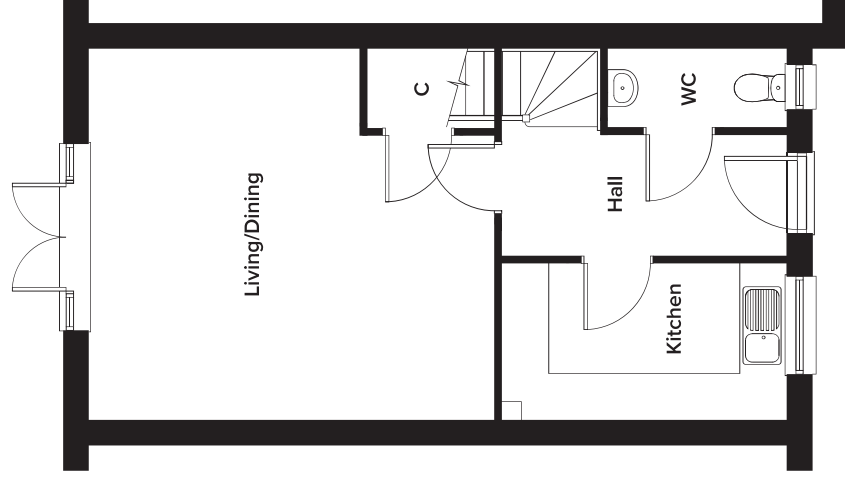


# Rosewood Phase 2, Maidstone, Kent

## 2 Bedroom Terraced

Plots 269 and 274



### Ground Floor

Kitchen	1.98m x 3.63m	6' 6" x 11' 11"
Living/Dining	4.73m x 5.17m	15' 7" x 17' 0"
WC	1.00m x 2.28m	3' 3" x 7' 6"

### First Floor

Bedroom 1	4.73m x 3.45m	15' 7" x 11' 4"
Bedroom 2	4.73m x 3.05m	15' 7" x 10' 1"
Bathroom	2.01m x 2.20m	6' 7" x 7' 3"

Please note: dimensions are approximate +/- 50mm and are not intended to be used for carpet sizes, appliance spaces or furniture items.