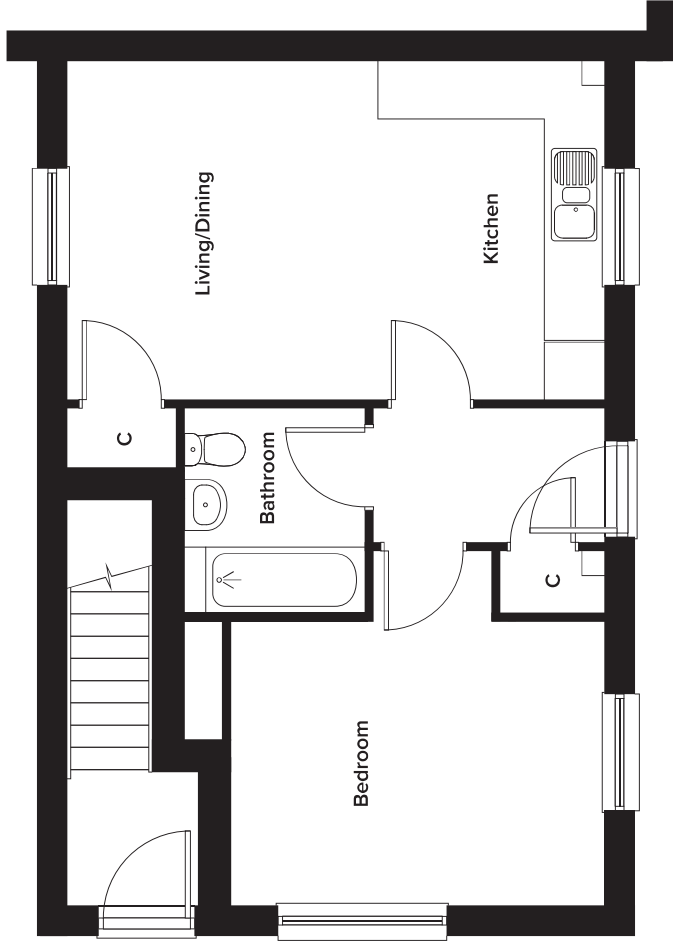


Rosewood Phase 2, Maidstone, Kent

1 Bedroom Flat - Ground Floor

Plot 264



Ground Floor

Kitchen/Living/Dining	3.61m x 5.75m	11' 10" x 18' 10"
Bedroom	3.04m x 4.00m	10' 0" x 13' 2"
Bathroom	2.20m x 1.93m	7' 3" x 6' 4"

Please note: dimensions are approximate +/- 50mm and are not intended to be used for carpet sizes, appliance spaces or furniture items.