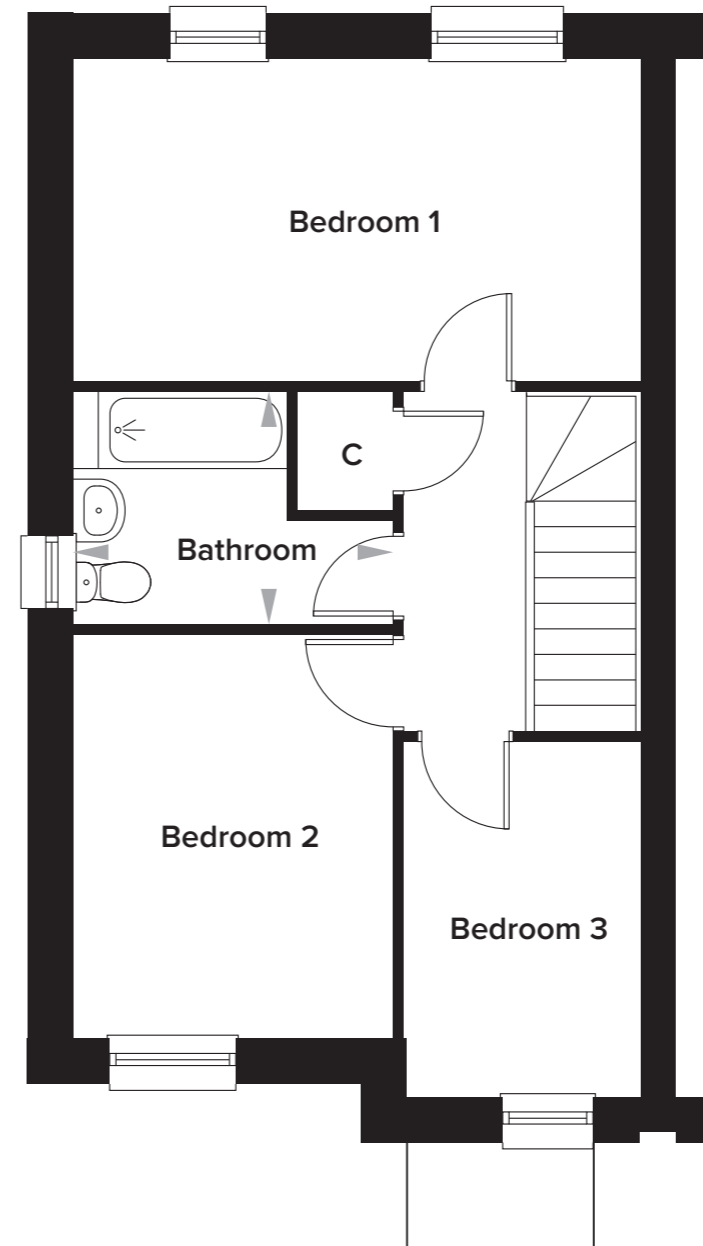
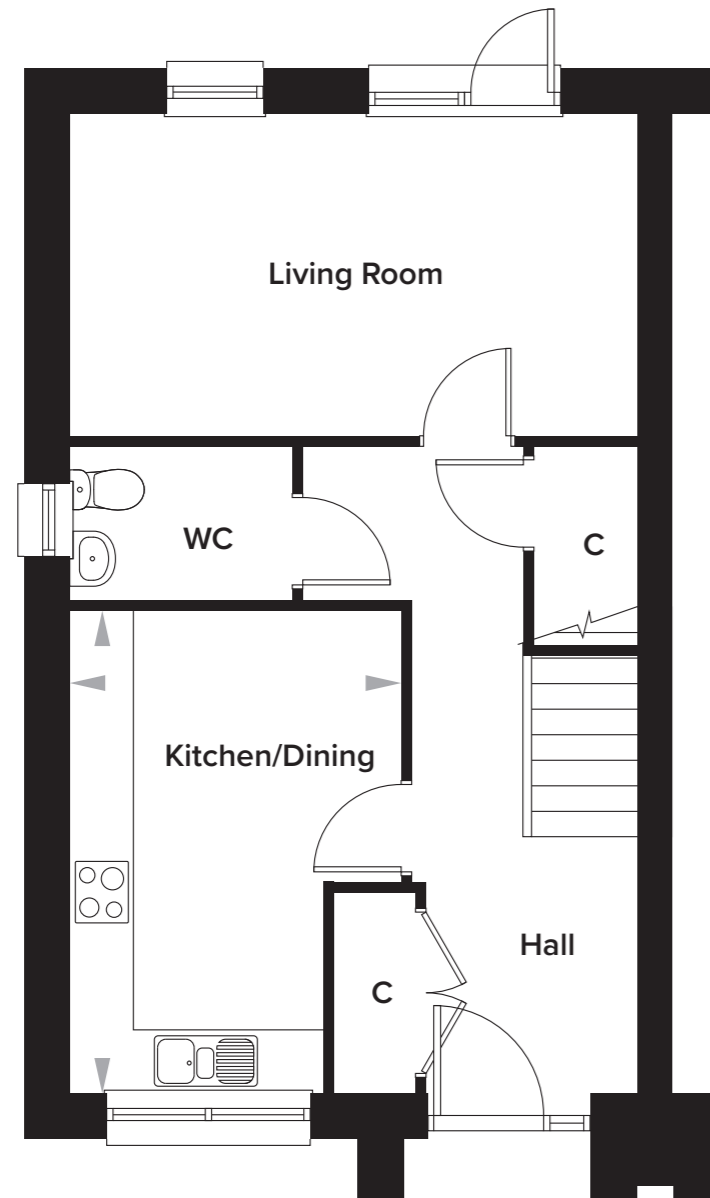


Fielding Park, Shepway, Maidstone

House Type 2 - 3 Bedroom Semi-Detached House

Plots 8, 10, 12 and 16



Ground Floor

Kitchen/Dining	3125mm x 4500mm	10' 3" x 14' 9"
Living Room	5350mm x 3000mm	17' 6" x 9' 10"

First Floor

Bedroom 1	5350mm x 3000mm	17' 6" x 9' 10"
Bedroom 2	3025mm x 3775mm	9' 11" x 12' 4"
Bedroom 3	2225mm x 3325mm	7' 3" x 10' 11"
Bathroom	3025mm x 2200mm	9' 11" x 7' 2"