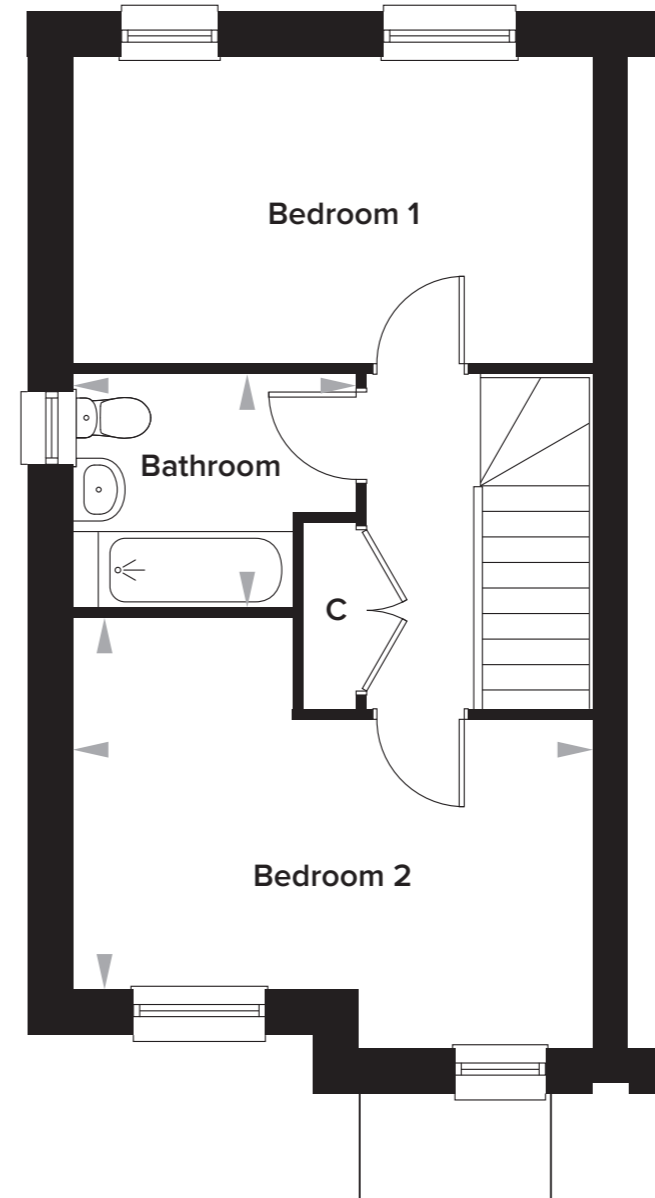
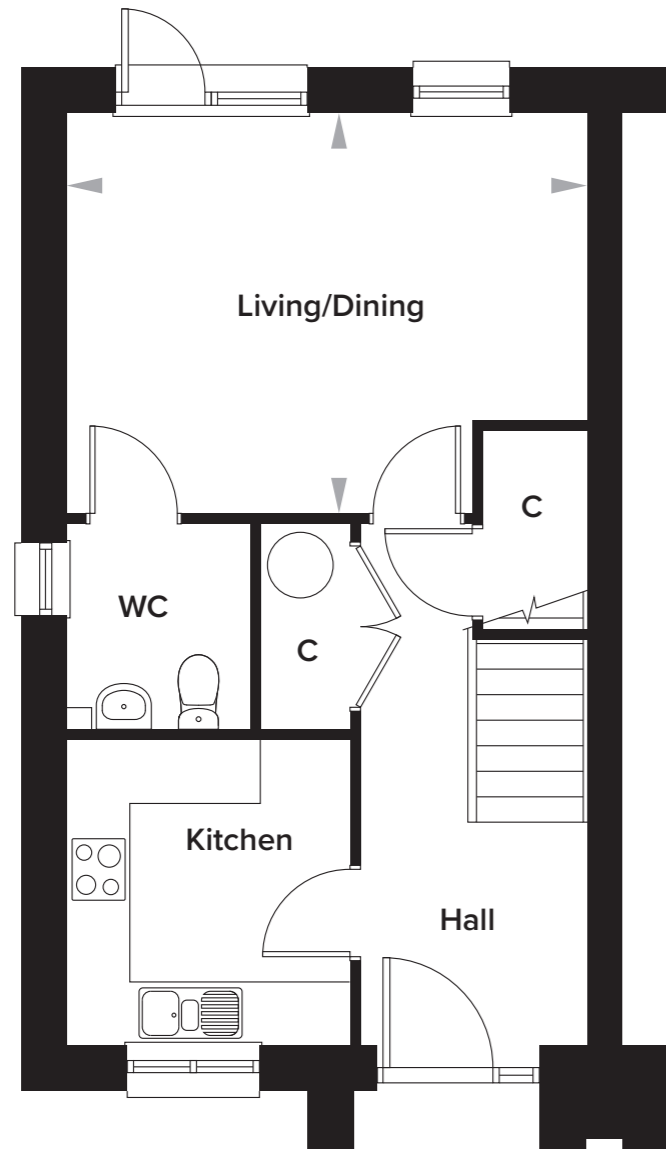


# Fielding Park, Shepway, Maidstone

## House Type 1 - 2 Bedroom Semi-Detached House

Plot 18



### Ground Floor

Kitchen	2675mm x 2825mm	18' 9" x 9' 3"
Living/Dining	4900mm x 3725mm	16' 1" x 12' 2"

### First Floor

Bedroom 1	4900mm x 2875mm	16' 1" x 9' 5"
Bedroom 2	4900mm x 3450mm	16' 1" x 11' 4"
Bathroom	2675mm x 2200mm	8' 9" x 7' 2"