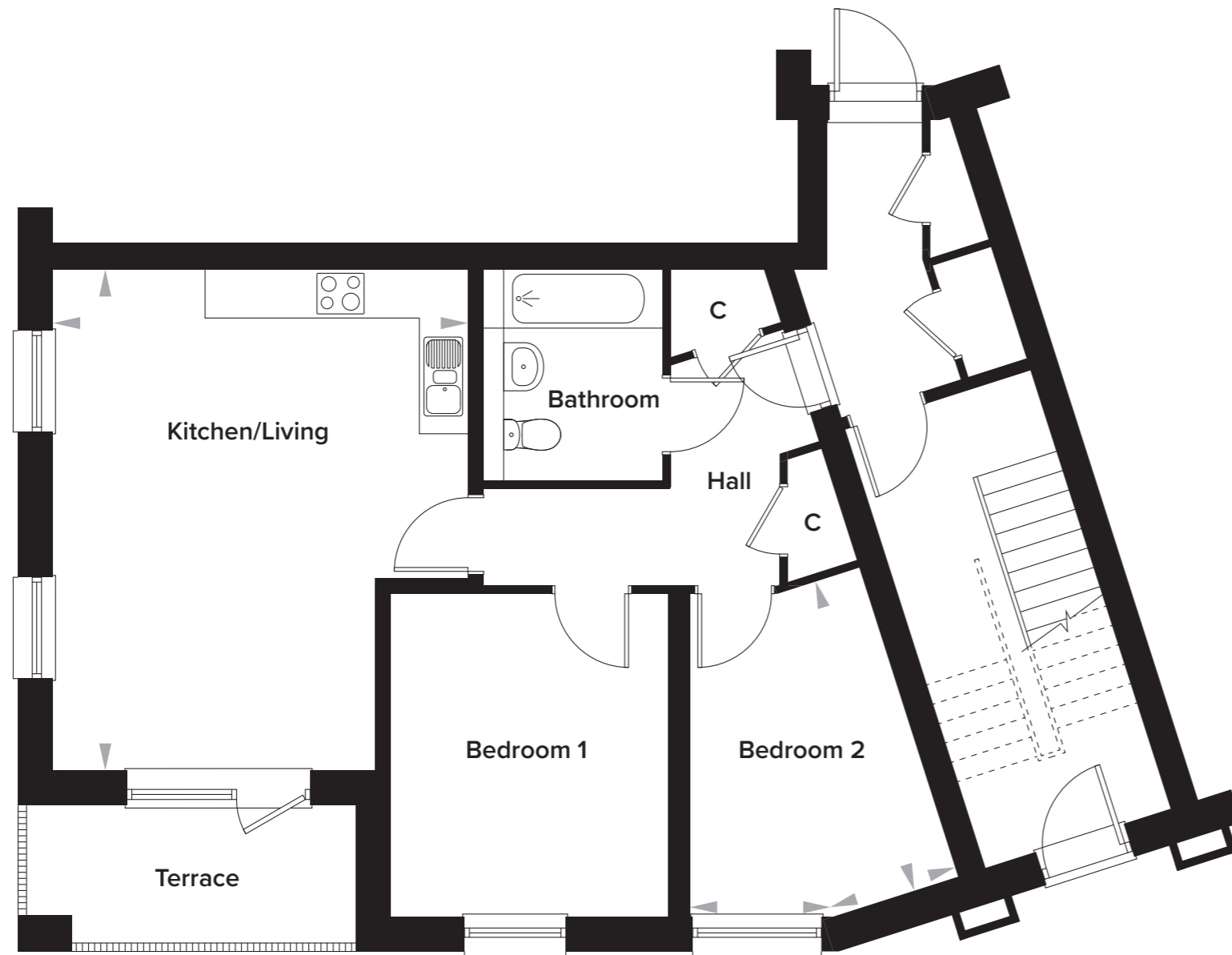
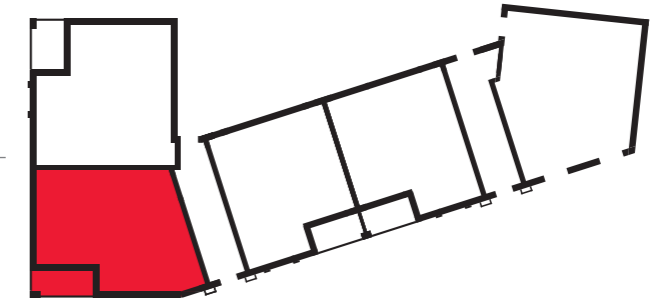


# Fielding Park, Shepway, Maidstone

## Apartment Block L - Ground Floor

Apt 0-3 - 2 Bedroom



### Apt 0-3

Kitchen/Living	5100mm x 6150mm	16' 9" x 20' 2"
Bedroom 1	3400mm x 3950mm	11' 2" x 12' 11"
Bedroom 2	1750mm + 1600mm x 3975mm	5' 9" + 5' 3" x 13' 0"
Bathroom	2200mm x 2600mm	7' 2" x 8' 6"

Please note: dimensions are approximate +/- 50mm and are not intended to be used for carpet sizes, appliance spaces or furniture items.