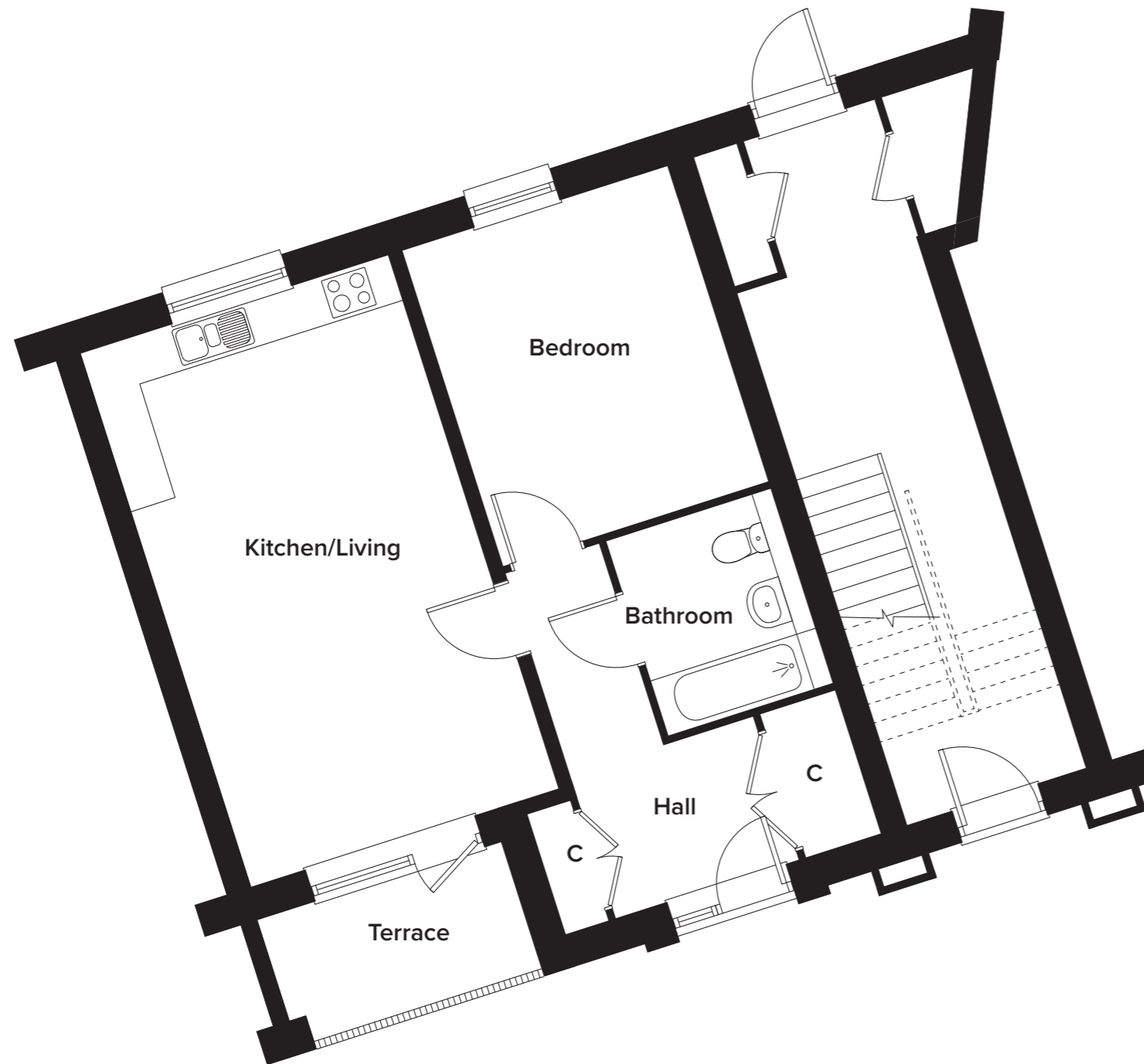
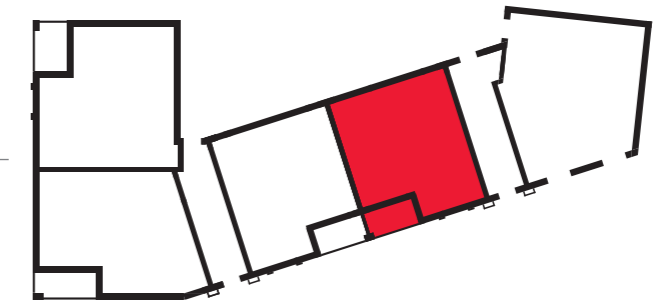


Fielding Park, Shepway, Maidstone

Apartment Block L - Ground Floor

Apt 0-1 - 1 Bedroom



Apt 0-1

| | | |
|----------------|-----------------|-----------------|
| Kitchen/Living | 4100mm x 7125mm | 13' 5" x 23' 4" |
| Bedroom | 3550mm x 4200mm | 11' 8" x 13' 9" |
| Bathroom | 2200mm x 2600mm | 7' 2" x 8' 6" |

Please note: dimensions are approximate +/- 50mm and are not intended to be used for carpet sizes, appliance spaces or furniture items.