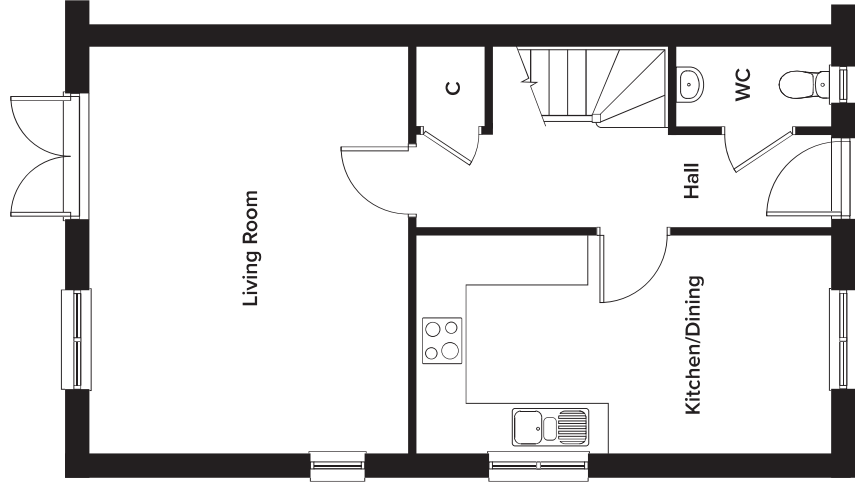


# Hyacinth Place, Maidstone

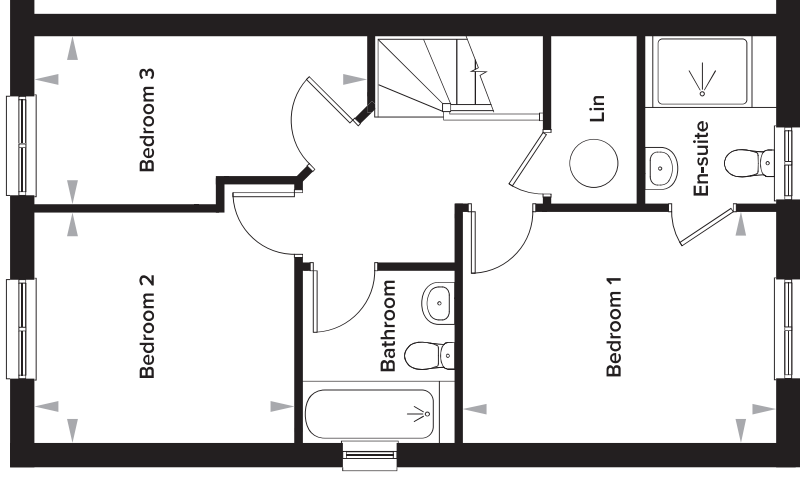
## 3 Bedroom Semi-Detached House

Plot 41



### Ground Floor

Kitchen/Dining	2720mm x 5195mm	8' 11" x 17' 0"
Living Room	5095mm x 3990mm	16' 8" x 13' 1"
WC	980mm x 1925mm	3' 2" x 6' 4"



### First Floor

Bedroom 1	2887mm x 3925mm	9' 5" x 12' 10"
En-suite	2090mm x 1630mm	6' 10" x 5' 4"
Bedroom 2	2880mm x 3256mm	9' 5" x 10' 8"
Bedroom 3	2095mm x 4170mm	6' 10" x 13' 8"
Bathroom	2145mm x 1895mm	7' 0" x 6' 2"

Please note: dimensions are approximate +/- 50mm and are not intended to be used for carpet sizes, appliance spaces or furniture items.