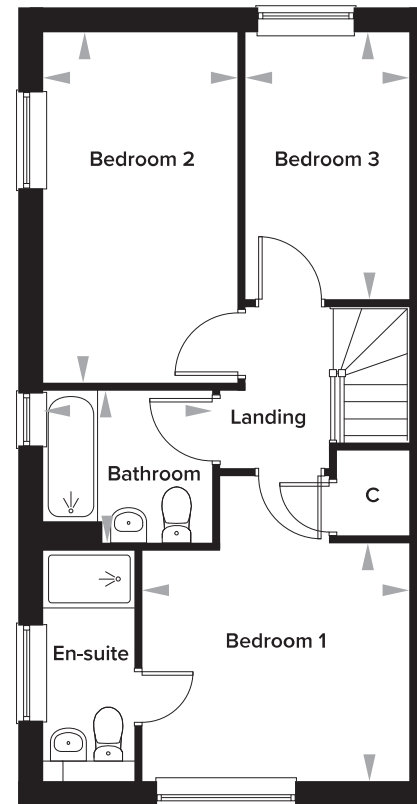
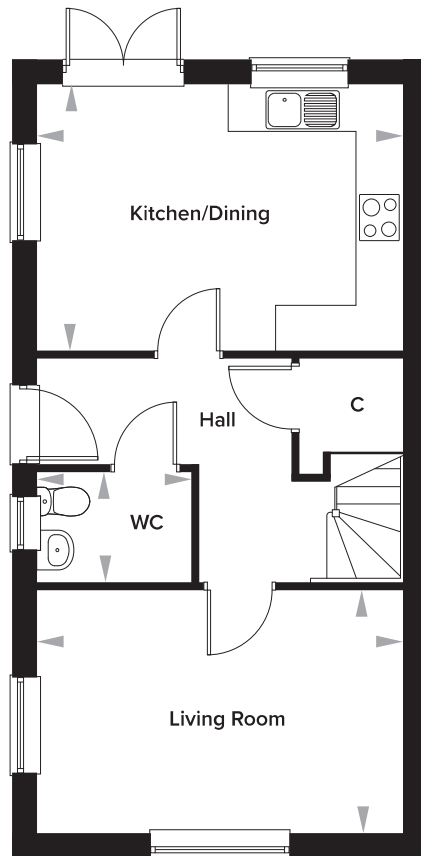


Oxenden Park, Herne Bay, Kent

The Blemmere 3 Bedroom Detached House

Plot 400



Ground Floor

Kitchen	4808mm x 3500mm	15' 9" x 11' 6"
Living Dining	4808mm x 3177mm	15' 9" x 10' 5"
WC	2038mm x 1432mm	6' 8" x 4' 8"

First Floor

Bedroom 1	3507mm x 3190mm	11' 6" x 10' 5"
Bedroom 1 En-suite	1207mm x 3031mm	3' 11" x 9' 11"
Bedroom 2	2557mm x 4600mm	8' 4" x 15' 1"
Bedroom 3	2157mm x 3500mm	7' 1" x 11' 6"
Bathroom	2227mm x 2000mm	7' 3" x 6' 6"

Please note: dimensions are approximate +/- 50mm and are not intended to be used for carpet sizes, appliance spaces or furniture items.