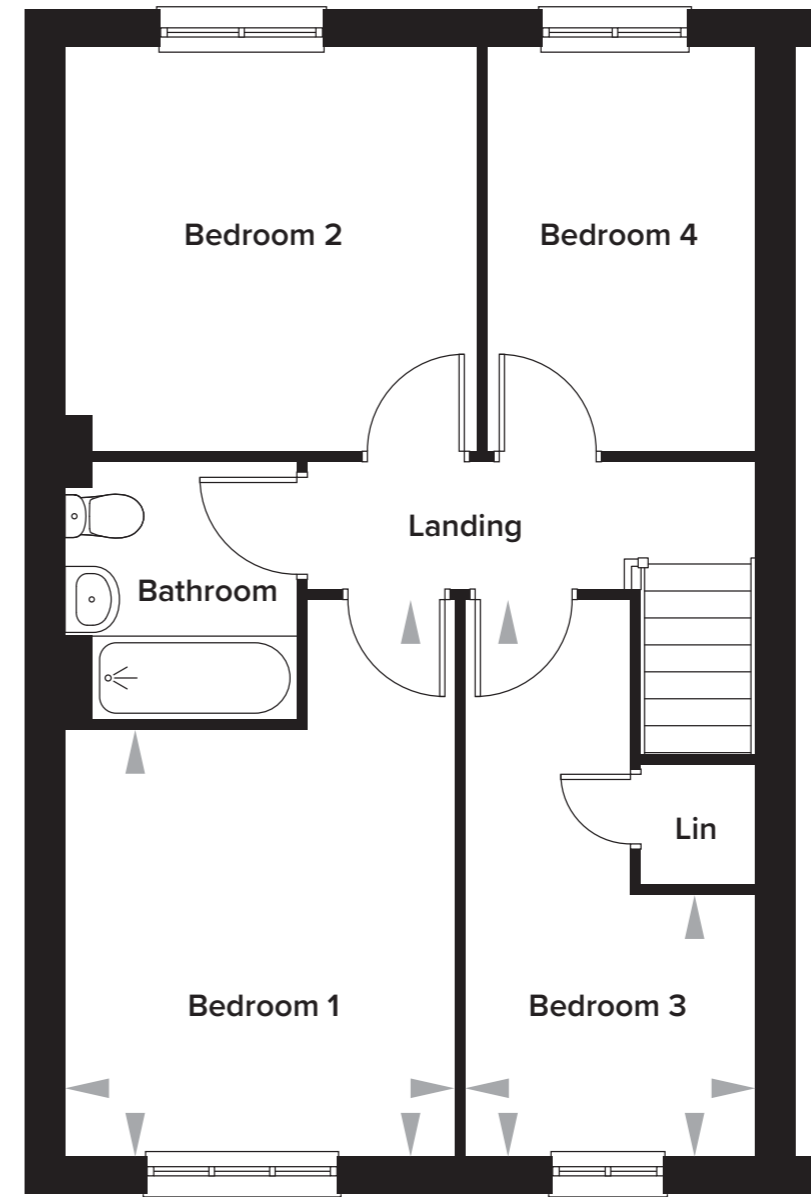
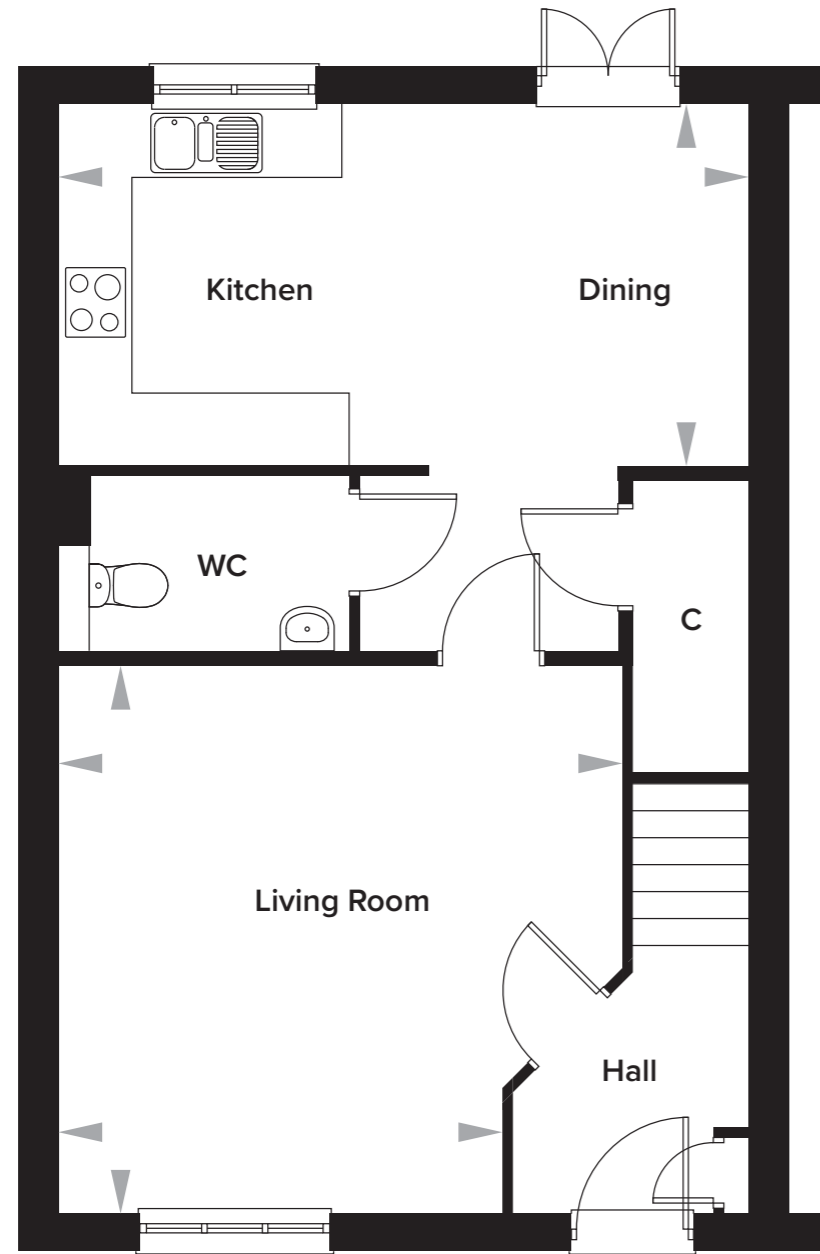


Oakapple Place Phase 2, Barming, Kent

4 Bedroom Semi-Detached House

Plot 116



Ground Floor

Kitchen/Dining	5.74m x 3.01m	18' 9" x 9' 10"
Living Room	4.70/3.70m x 4.56m	15' 5"/12' 1" x 14' 11"

First Floor

Bedroom 1	3.23m x 4.64/3.55m	10' 7" x 15' 2"/11' 7"
Bedroom 2	3.42m x 3.36m	11' 2" x 11' 0"
Bedroom 3	2.41m x 4.64/2.16m	7' 11" x 15' 2"/7' 1"
Bedroom 4	2.23m x 3.36m	7' 3" x 11' 0"
Bathroom	1.93m x 2.14m	6' 4" x 7' 0"