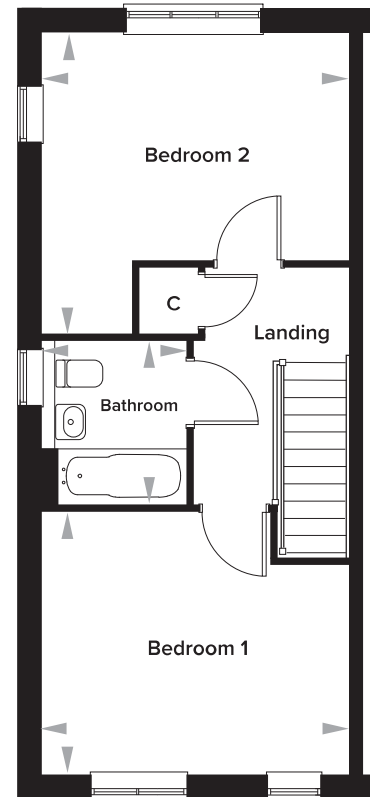
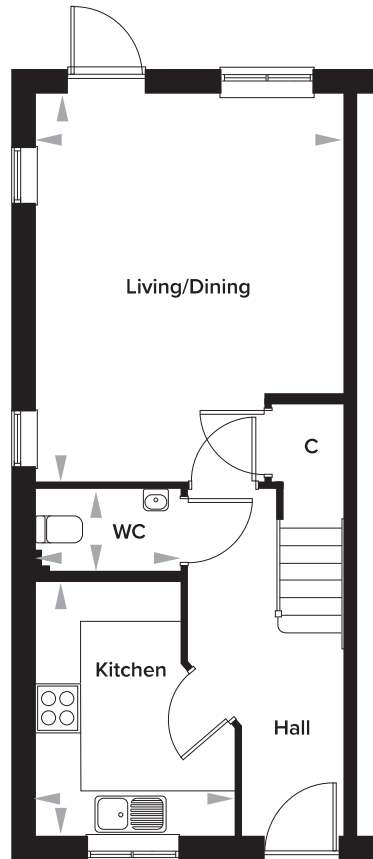


# Oxenden Park, Herne Bay, Kent

## The Baker 2 Bedroom Semi-Detached House

Plots 130 and 432



### Ground Floor

Kitchen	2647mm x 3360mm	8' 8" x 11' 0"
Living/Dining	4050mm x 5120mm	13' 3" x 16' 9"
WC	1927mm x 1085mm	6' 4" x 3' 7"

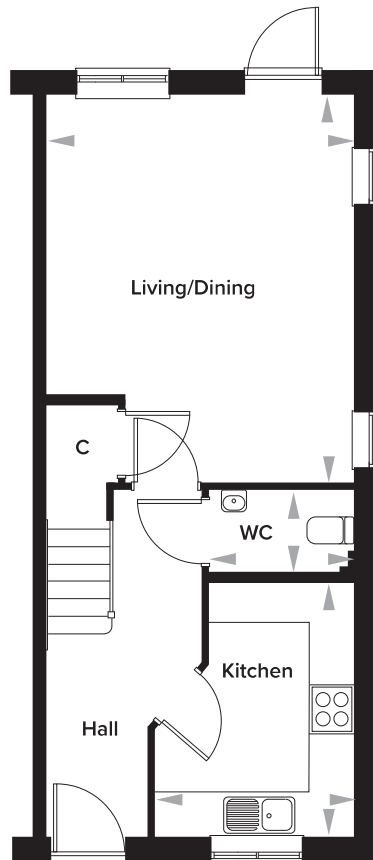
### First Floor

Bedroom 1	4050mm x 3460mm	13' 3" x 11' 4"
Bedroom 2	4050mm x 3982mm	13' 3" x 13' 0"
Bathroom	1940mm x 2170mm	6' 4" x 7' 1"

# Oxenden Park, Herne Bay, Kent

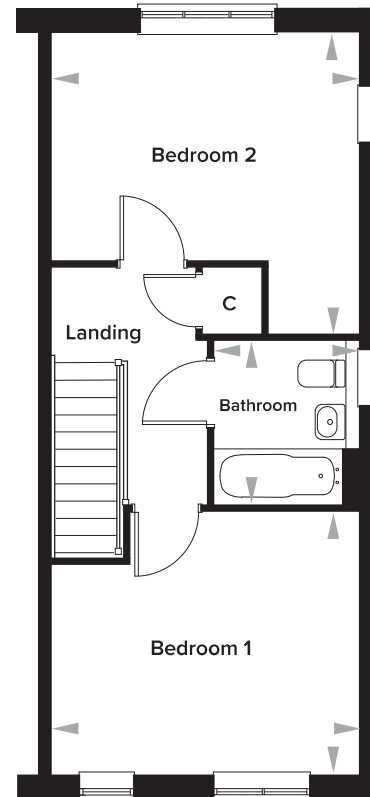
## The Baker 2 Bedroom Semi-Detached House

Plot 436



### Ground Floor

Kitchen	2647mm x 3360mm	8' 8" x 11' 0"
Living/Dining	4050mm x 5120mm	13' 3" x 16' 9"
WC	1927mm x 1085mm	6' 4" x 3' 7"



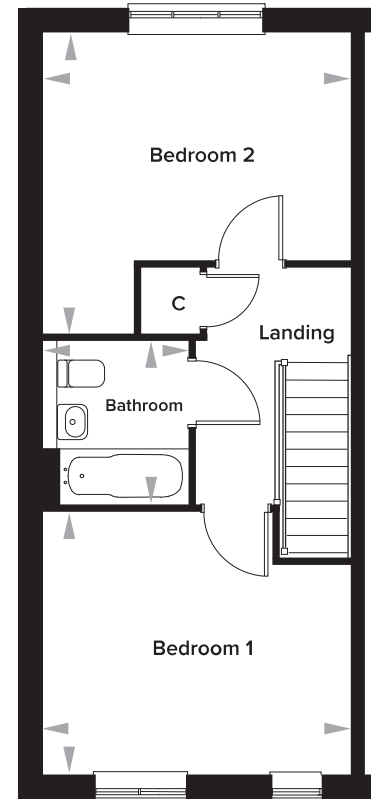
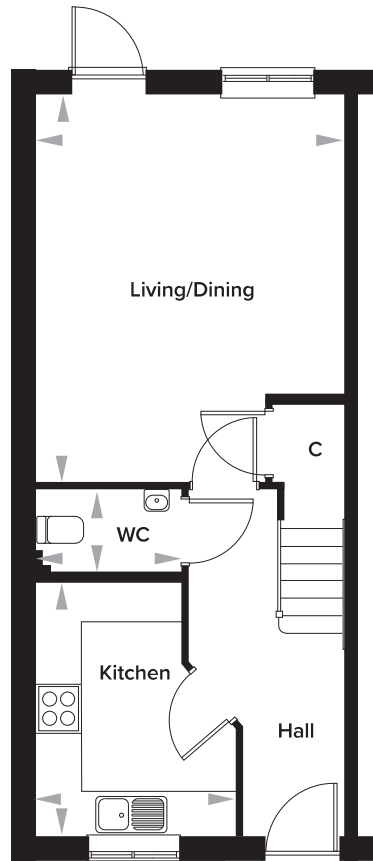
### First Floor

Bedroom 1	4050mm x 3460mm	13' 3" x 11' 4"
Bedroom 2	4050mm x 3982mm	13' 3" x 13' 0"
Bathroom	1940mm x 2170mm	6' 4" x 7' 1"

# Oxenden Park, Herne Bay, Kent

## The Baker 2 Bedroom Semi-Detached House

Plots 120 and 404



### Ground Floor

Kitchen	2647mm x 3360mm	8' 8" x 11' 0"
Living/Dining	4050mm x 5120mm	13' 3" x 16' 9"
WC	1927mm x 1085mm	6' 4" x 3' 7"

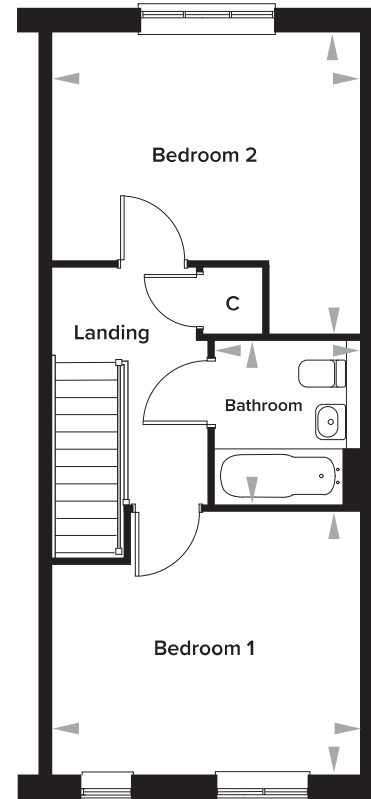
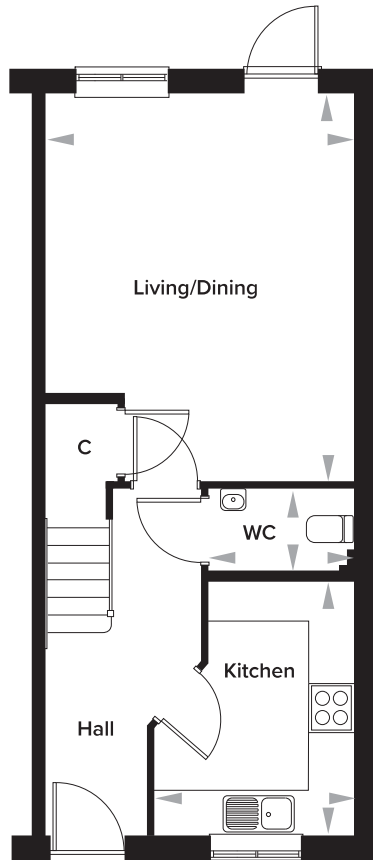
### First Floor

Bedroom 1	4050mm x 3460mm	13' 3" x 11' 4"
Bedroom 2	4050mm x 3982mm	13' 3" x 13' 0"
Bathroom	1940mm x 2170mm	6' 4" x 7' 1"

# Oxenden Park, Herne Bay, Kent

## The Baker 2 Bedroom Semi-Detached House

Plots 119, 129, 403 and 405



### Ground Floor

Kitchen	2647mm x 3360mm	8' 8" x 11' 0"
Living/Dining	4050mm x 5120mm	13' 3" x 16' 9"
WC	1927mm x 1085mm	6' 4" x 3' 7"

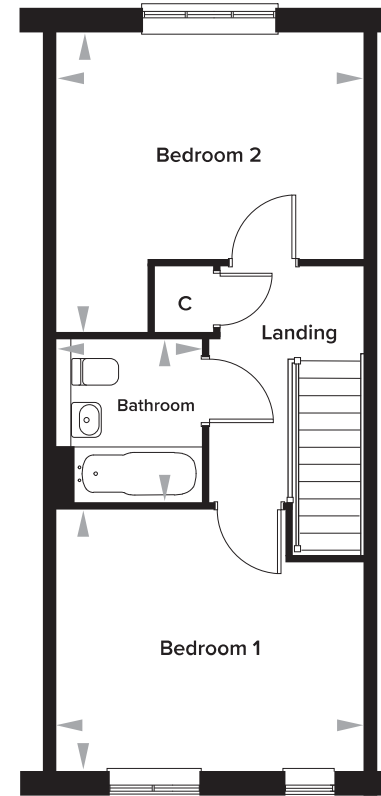
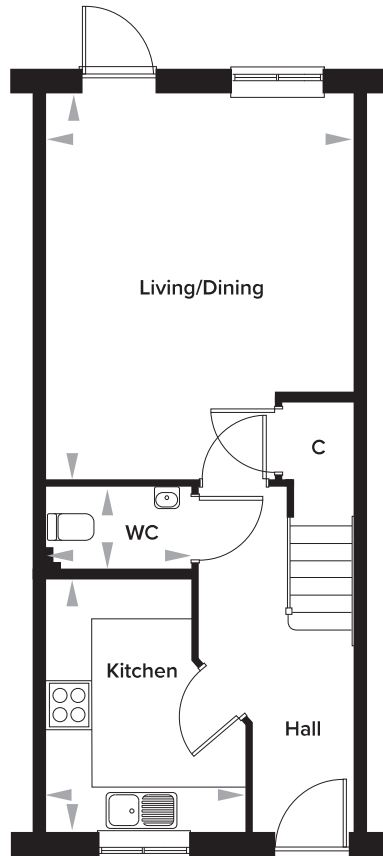
### First Floor

Bedroom 1	4050mm x 3460mm	13' 3" x 11' 4"
Bedroom 2	4050mm x 3982mm	13' 3" x 13' 0"
Bathroom	1940mm x 2170mm	6' 4" x 7' 1"

# Oxenden Park, Herne Bay, Kent

## The Baker 2 Bedroom Mid-Terrace House

Plots 122, 406 and 431



### Ground Floor

Kitchen	2647mm x 3360mm	8' 8" x 11' 0"
Living/Dining	4050mm x 5120mm	13' 3" x 16' 9"
WC	1927mm x 1085mm	6' 4" x 3' 7"

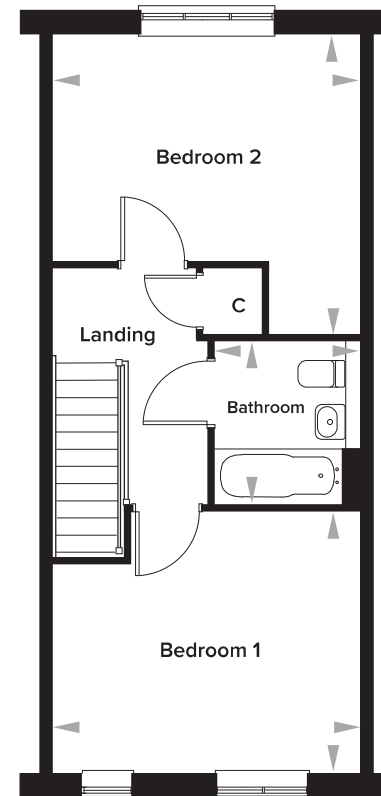
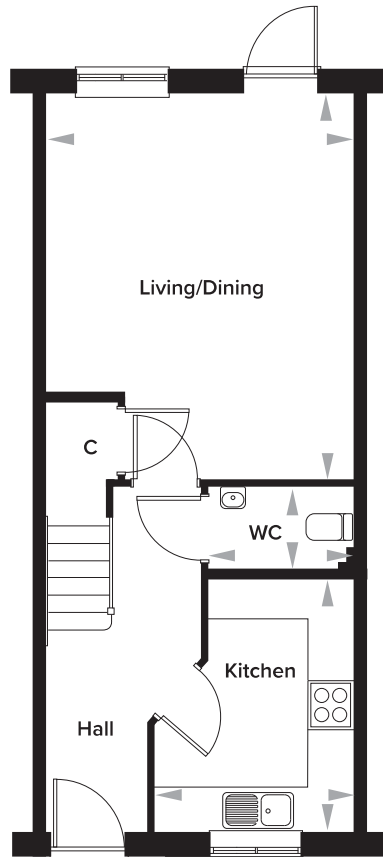
### First Floor

Bedroom 1	4050mm x 3460mm	13' 3" x 11' 4"
Bedroom 2	4050mm x 3982mm	13' 3" x 13' 0"
Bathroom	1940mm x 2170mm	6' 4" x 7' 1"

# Oxenden Park, Herne Bay, Kent

## The Baker 2 Bedroom Mid-Terrace House

Plot 437



### Ground Floor

Kitchen	2647mm x 3360mm	8' 8" x 11' 0"
Living/Dining	4050mm x 5120mm	13' 3" x 16' 9"
WC	1927mm x 1085mm	6' 4" x 3' 7"

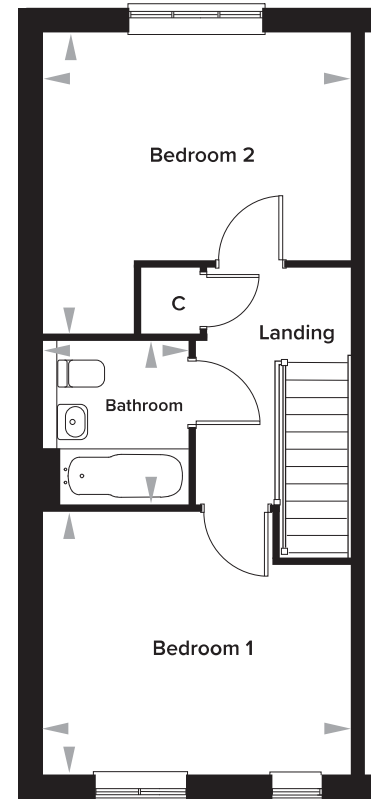
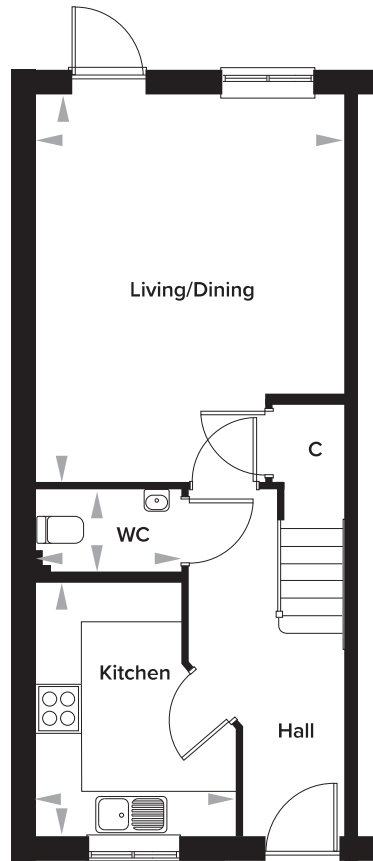
### First Floor

Bedroom 1	4050mm x 3460mm	13' 3" x 11' 4"
Bedroom 2	4050mm x 3982mm	13' 3" x 13' 0"
Bathroom	1940mm x 2170mm	6' 4" x 7' 1"

# Oxenden Park, Herne Bay, Kent

## The Baker 2 Bedroom End Of Terrace House

Plots 123, 407 and 438



### Ground Floor

Kitchen	2647mm x 3360mm	8' 8" x 11' 0"
Living/Dining	4050mm x 5120mm	13' 3" x 16' 9"
WC	1927mm x 1085mm	6' 4" x 3' 7"

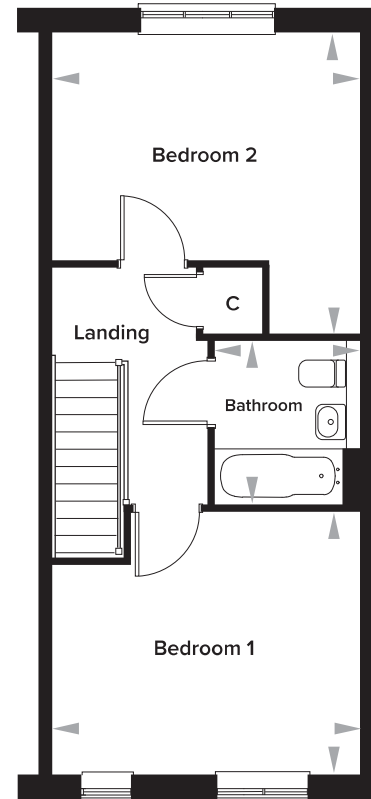
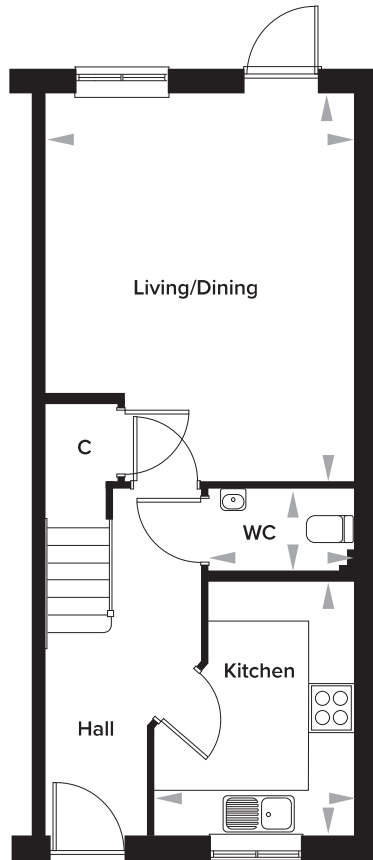
### First Floor

Bedroom 1	4050mm x 3460mm	13' 3" x 11' 4"
Bedroom 2	4050mm x 3982mm	13' 3" x 13' 0"
Bathroom	1940mm x 2170mm	6' 4" x 7' 1"

# Oxenden Park, Herne Bay, Kent

## The Baker 2 Bedroom End Of Terrace House

Plots 121 and 430



### Ground Floor

Kitchen	2647mm x 3360mm	8' 8" x 11' 0"
Living/Dining	4050mm x 5120mm	13' 3" x 16' 9"
WC	1927mm x 1085mm	6' 4" x 3' 7"

### First Floor

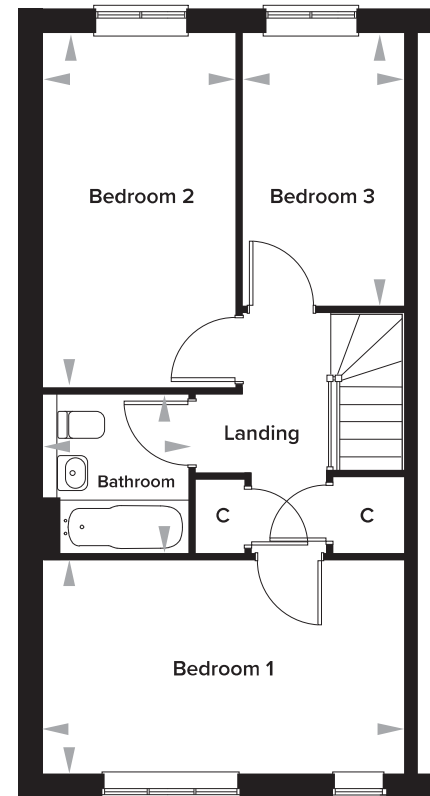
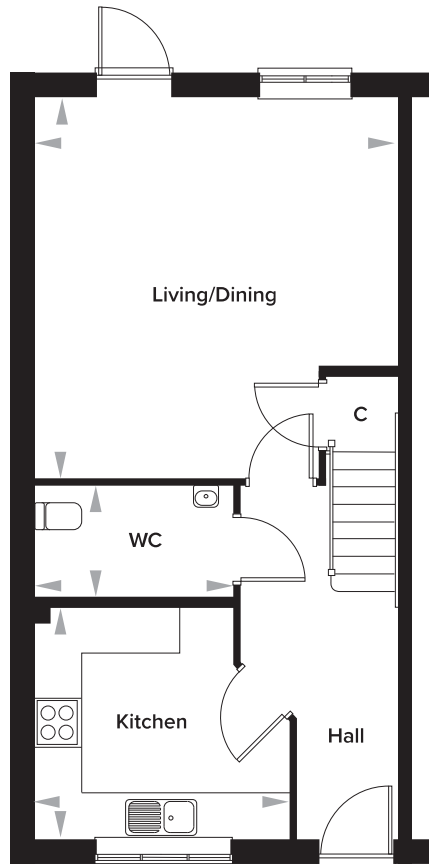
Bedroom 1	4050mm x 3460mm	13' 3" x 11' 4"
Bedroom 2	4050mm x 3982mm	13' 3" x 13' 0"
Bathroom	1940mm x 2170mm	6' 4" x 7' 1"



# Oxenden Park, Herne Bay, Kent

## The Tillman 3 Bedroom Semi-Detached House

Plots 168 and 402



### Ground Floor

Kitchen	3355mm x 3060mm	11' 0" x 10' 0"
Living Dining	4798mm x 5045mm	15' 9" x 16' 6"
WC	2610mm x 1460mm	8' 7" x 5' 0"

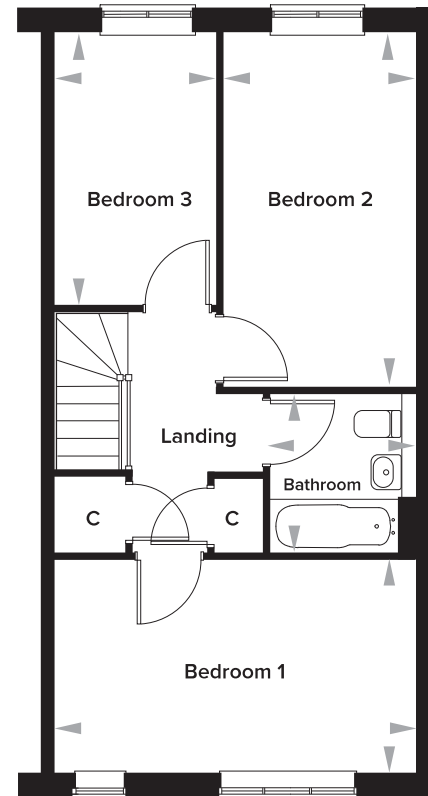
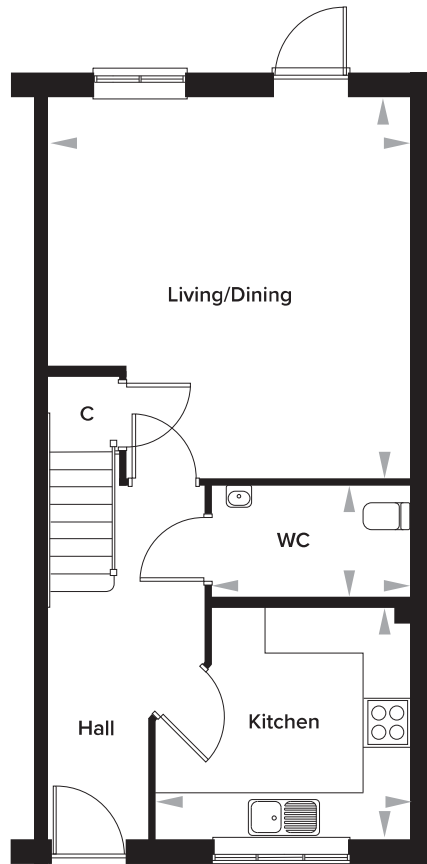
### First Floor

Bedroom 1	4798mm x 2816mm	15' 9" x 9' 3"
Bedroom 2	2548mm x 4691mm	8' 4" x 15' 4"
Bedroom 3	2148mm x 3610mm	7' 0" x 11' 10"
Bathroom	1928mm x 2094mm	6' 4" x 6' 10"

# Oxenden Park, Herne Bay, Kent

## The Tillman 3 Bedroom Semi-Detached House

Plot 401



### Ground Floor

Kitchen	3355mm x 3060mm	11' 0" x 10' 0"
Living Dining	4798mm x 5045mm	15' 9" x 16' 6"
WC	2610mm x 1460mm	8' 7" x 5' 0"

### First Floor

Bedroom 1	4798mm x 2816mm	15' 9" x 9' 3"
Bedroom 2	2548mm x 4691mm	8' 4" x 15' 4"
Bedroom 3	2148mm x 3610mm	7' 0" x 11' 10"
Bathroom	1928mm x 2094mm	6' 4" x 6' 10"