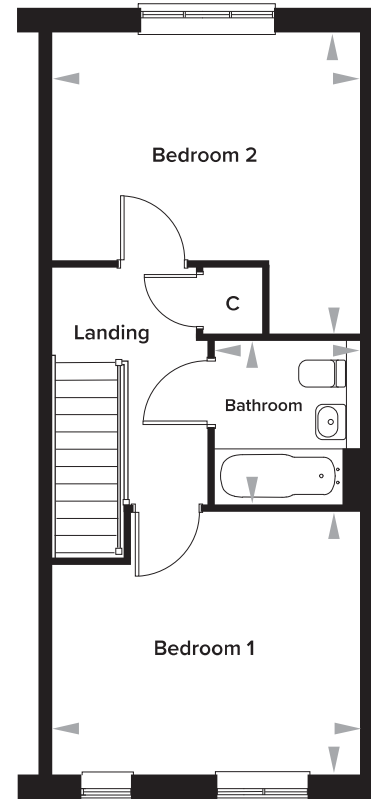
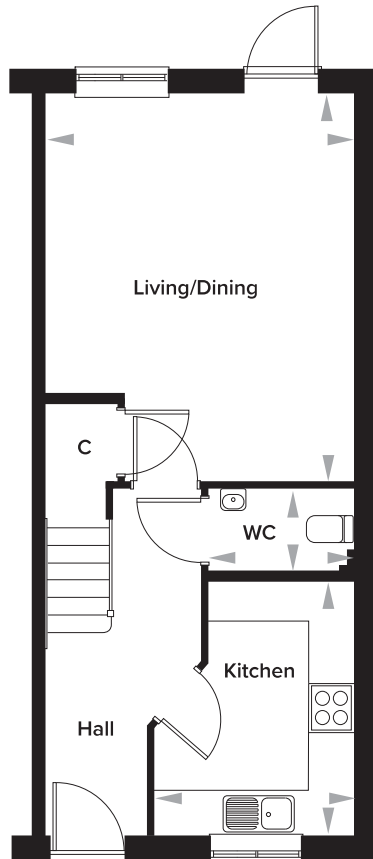


# Oxenden Park, Herne Bay, Kent

## The Baker 2 Bedroom Semi-Detached House

Plots 119, 129, 403 and 405



### Ground Floor

|               |                 |                 |
|---------------|-----------------|-----------------|
| Kitchen       | 2647mm x 3360mm | 8' 8" x 11' 0"  |
| Living/Dining | 4050mm x 5120mm | 13' 3" x 16' 9" |
| WC            | 1927mm x 1085mm | 6' 4" x 3' 7"   |

### First Floor

|           |                 |                 |
|-----------|-----------------|-----------------|
| Bedroom 1 | 4050mm x 3460mm | 13' 3" x 11' 4" |
| Bedroom 2 | 4050mm x 3982mm | 13' 3" x 13' 0" |
| Bathroom  | 1940mm x 2170mm | 6' 4" x 7' 1"   |