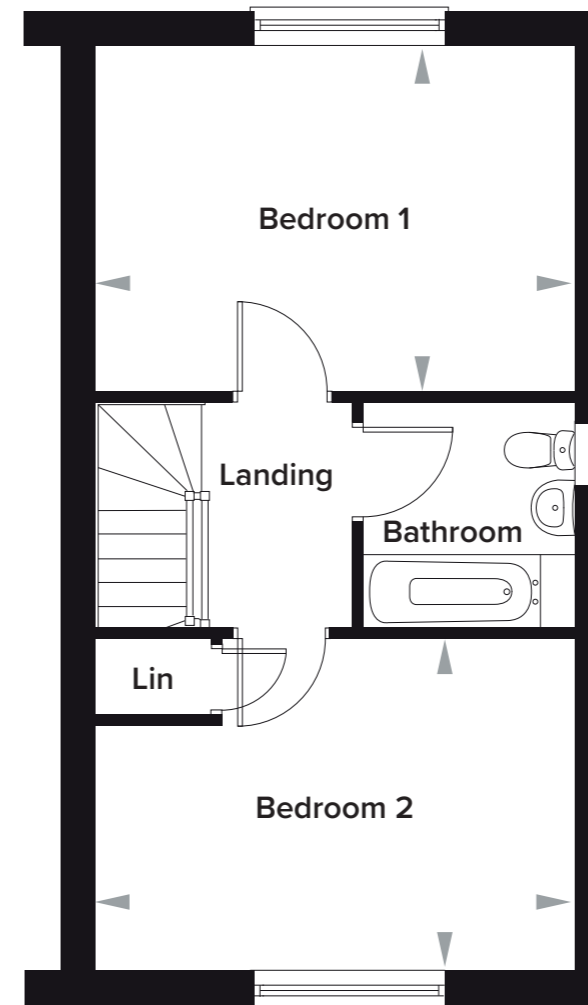
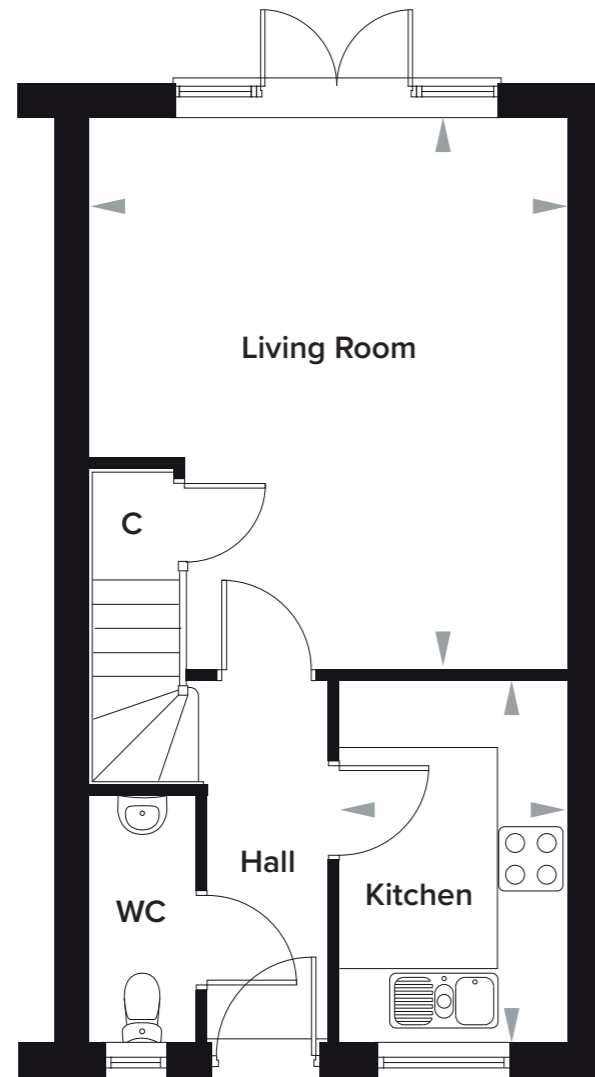


The Burrows, Paddock Wood, Kent

2 Bedroom Semi-Detached House

Plots 180 and 218



Ground Floor

Kitchen	2150mm x 3400mm	7' 1" x 11' 2"
Living Room	4530mm x 5242mm	14' 10" x 17' 2"
WC	1010mm x 2247mm	3' 4" x 7' 4"

First Floor

Bedroom 1	4530mm x 3269mm	14' 10" x 10' 9"
Bedroom 2	4530mm x 3130mm	14' 10" x 10' 3"
Bathroom	2000mm x 2140mm	6' 7" x 7' 0"

Please note: dimensions are approximate +/- 50mm and are not intended to be used for carpet sizes, appliance spaces or furniture items.

HT 2B AFF