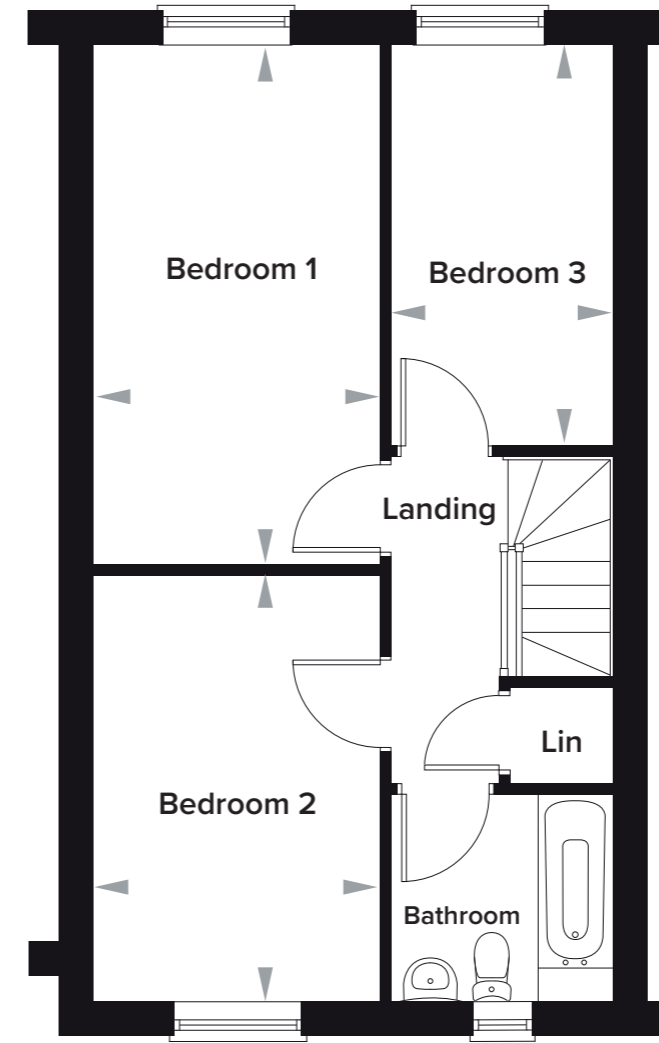
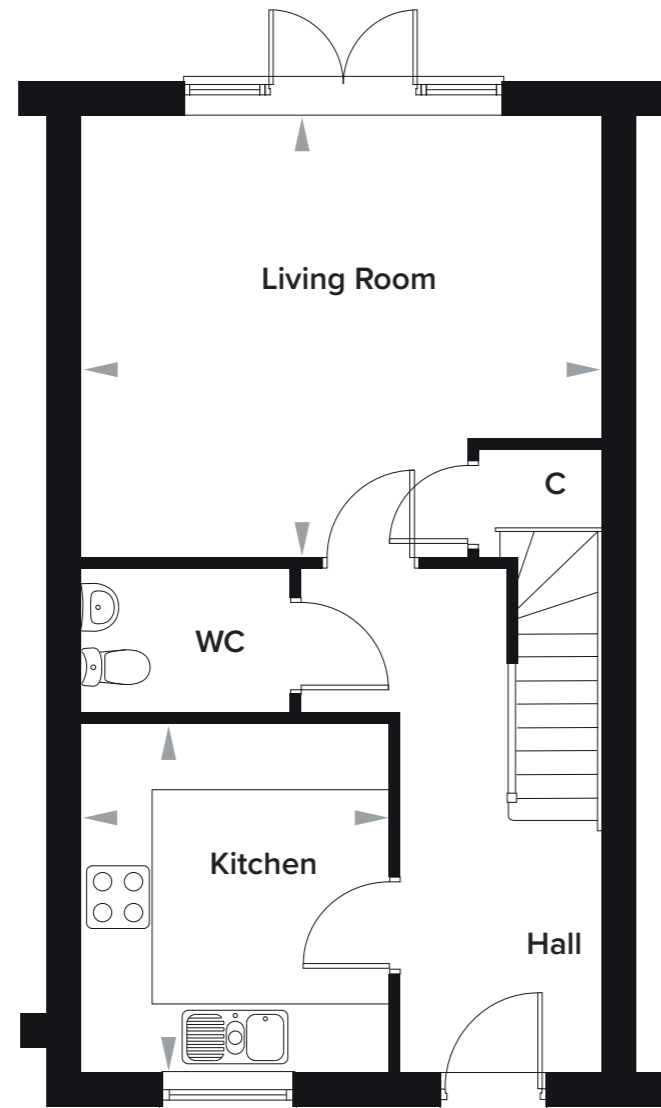


The Burrows, Paddock Wood, Kent

3 Bedroom Mid Terrace House

Plot 212



Ground Floor

Kitchen	2970mm x 3400mm	9' 9" x 11' 2"
Living Room	5036mm x 4292mm	16' 6" x 14' 1"
WC	2010mm x 1410mm	6' 7" x 4' 8"

First Floor

Bedroom 1	2793mm x 5045mm	9' 2" x 16' 7"
Bedroom 2	2793mm x 4136mm	9' 2" x 13' 7"
Bedroom 3	2150mm x 3908mm	7' 1" x 12' 10"
Bathroom	2150mm x 2000mm	7' 0" x 6' 7"