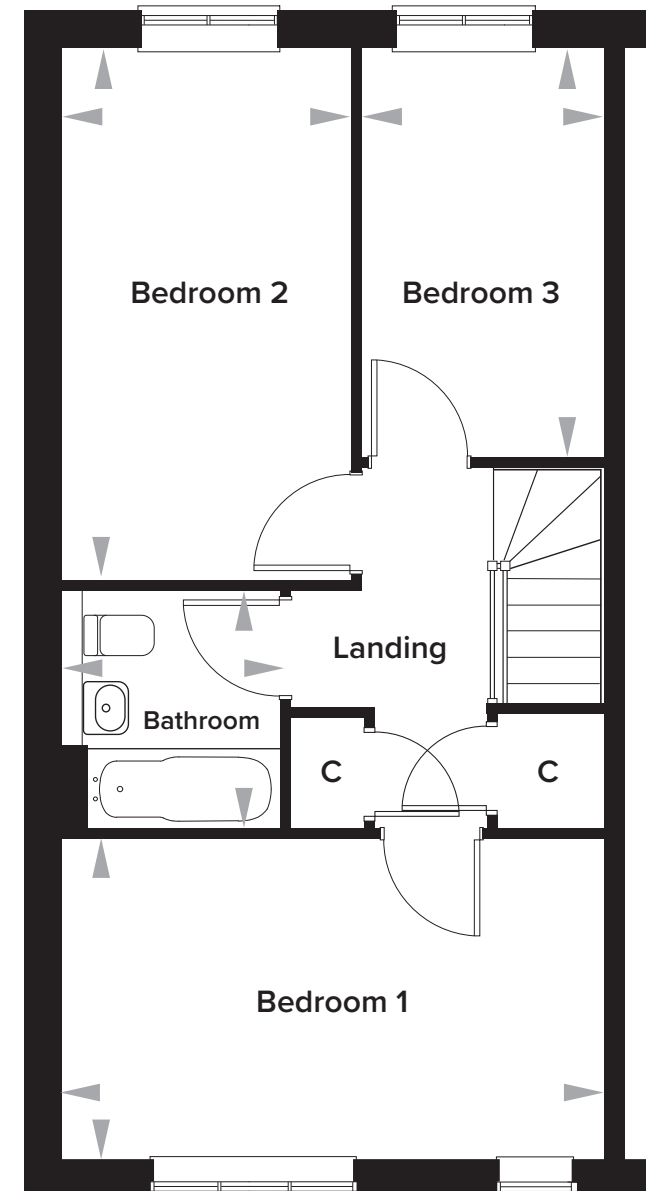
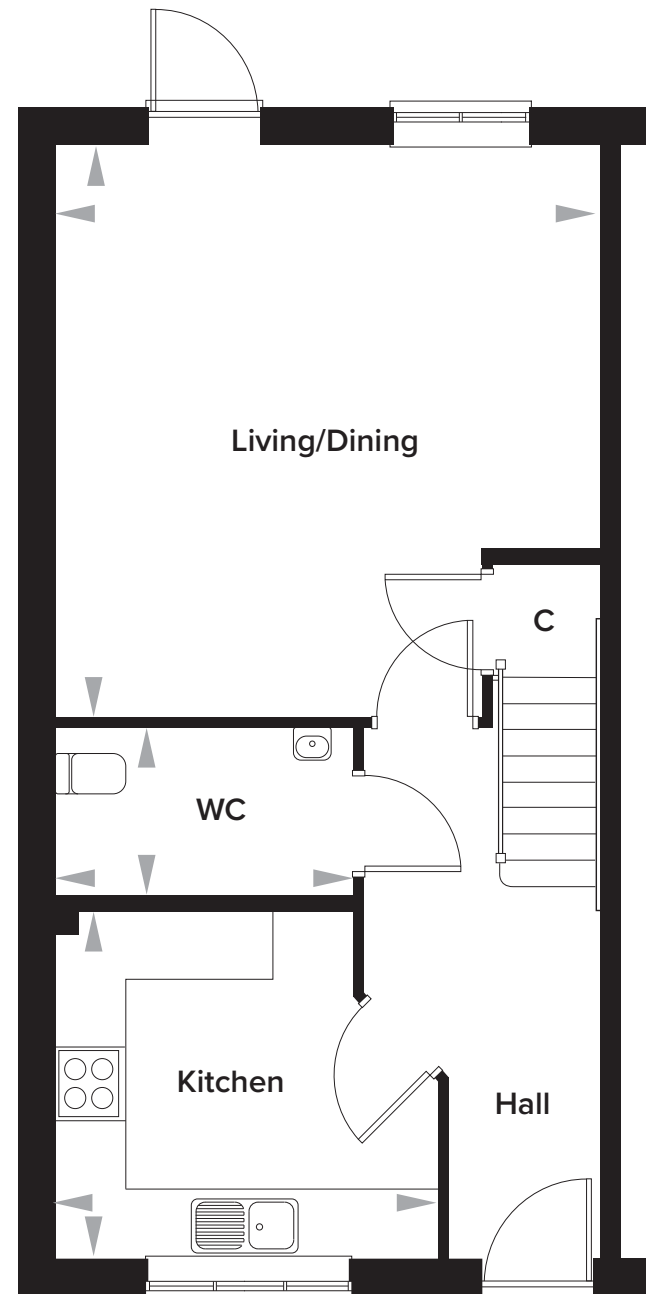


Rosewood, Maidstone, Kent

The Tillman 3 Bedroom Semi-Detached House

Plots 77 and 132



Ground Floor

| | | |
|---------------|-----------------|------------------|
| Kitchen | 3345mm x 3028mm | 10' 11" x 9' 11" |
| Living Dining | 4788mm x 5042mm | 15' 8" x 16' 6" |
| WC | 2607mm x 1457mm | 8' 7" x 5' 0" |

First Floor

| | | |
|-----------|-----------------|-----------------|
| Bedroom 1 | 4788mm x 2818mm | 15' 8" x 9' 3" |
| Bedroom 2 | 2550mm x 4693mm | 8' 4" x 15' 4" |
| Bedroom 3 | 2150mm x 3612mm | 7' 0" x 11' 10" |
| Bathroom | 1928mm x 2094mm | 6' 4" x 6' 10" |