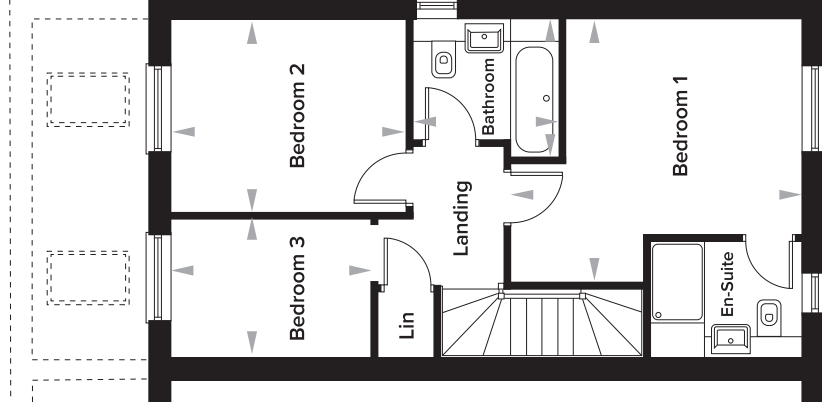
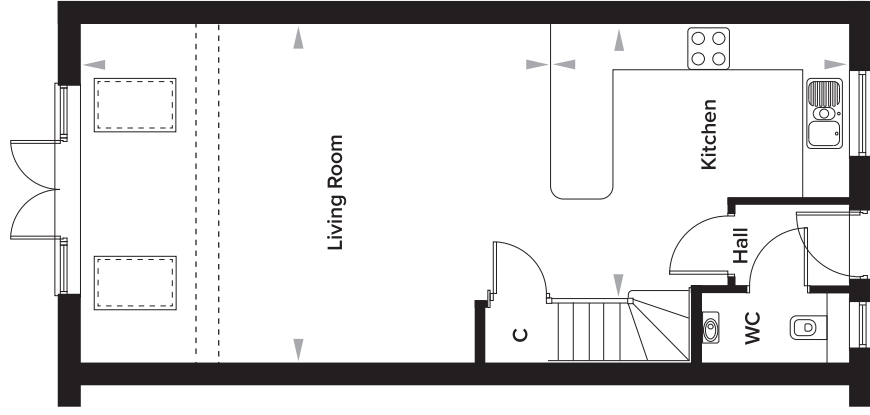


The Burrows, Paddock Wood, Kent

3 Bedroom Semi-Detached House

Plots 111, 113, 115 and 173



Ground Floor

| | | |
|-------------|-----------------|-----------------|
| Kitchen | 4001mm x 4333mm | 13' 2" x 14' 3" |
| Living Room | 4924mm x 6877mm | 16' 2" x 22' 7" |
| WC | 1000mm x 2137mm | 3' 3" x 7' 0" |

First Floor

| | | |
|-----------|-----------------|------------------|
| Bedroom 1 | 3833mm x 4238mm | 12' 7" x 13' 11" |
| En-Suite | 1698mm x 2200mm | 5' 7" x 7' 2" |
| Bedroom 2 | 2809mm x 3420mm | 9' 3" x 11' 3" |
| Bedroom 3 | 2022mm x 2909mm | 6' 8" x 9' 7" |
| Bathroom | 2000mm x 2124mm | 6' 7" x 7' 0" |