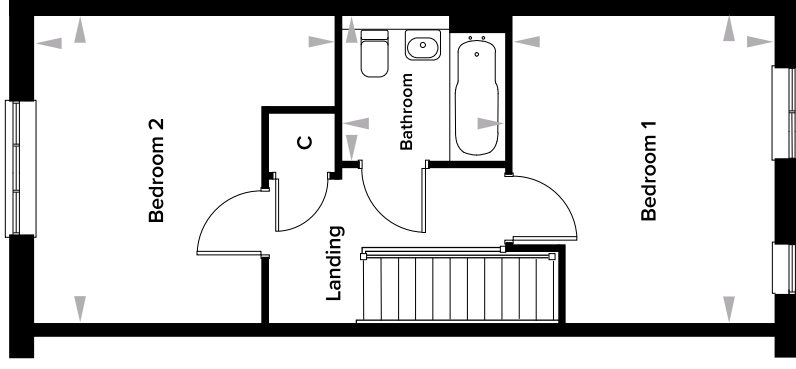
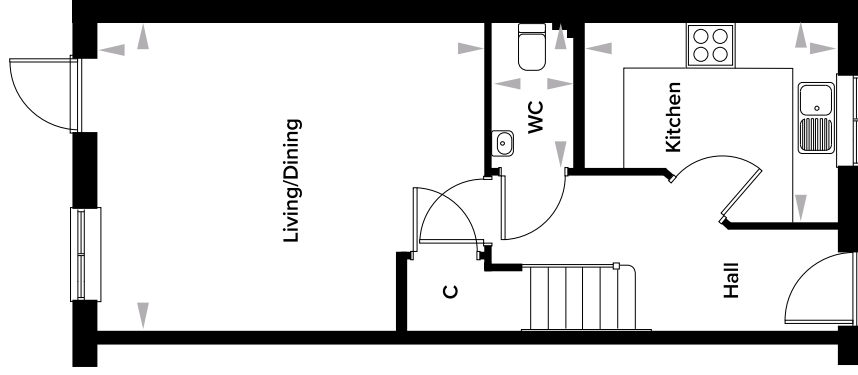


# Oxenden Park, Herne Bay, Kent

## The Baker 2 Bedroom End Of Terrace House

Plots 121 and 430



### Ground Floor

Kitchen	2647mm x 3360mm	8' 8" x 11' 0"
Living/Dining	4050mm x 5120mm	13' 3" x 16' 9"
WC	1927mm x 1085mm	6' 4" x 3' 7"

### First Floor

Bedroom 1	4050mm x 3460mm	13' 3" x 11' 4"
Bedroom 2	4050mm x 3982mm	13' 3" x 13' 0"
Bathroom	1940mm x 2170mm	6' 4" x 7' 1"

Please note: dimensions are approximate +/- 50mm and are not intended to be used for carpet sizes, appliance spaces or furniture items.