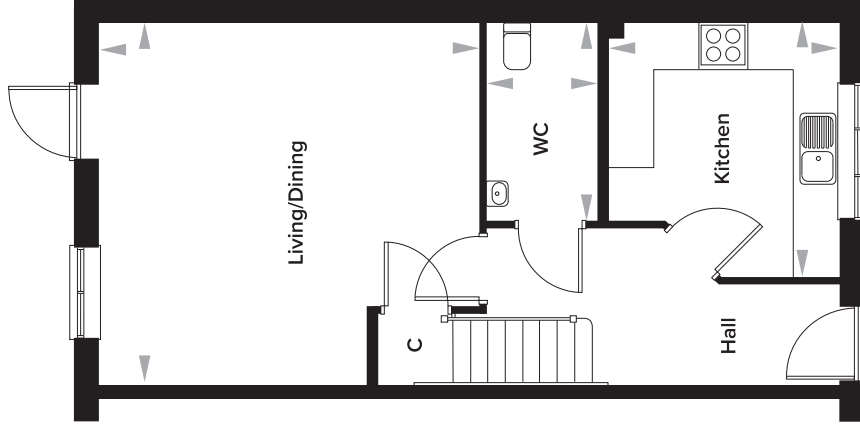


Rosewood, Maidstone, Kent

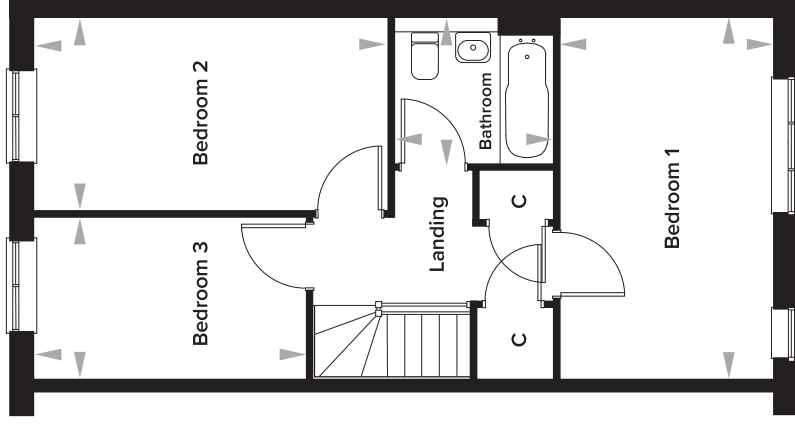
The Tillman 3 Bedroom Semi-Detached House

Plots 27, 135 and 137



Ground Floor

Kitchen	3345mm x 3028mm	10' 11" x 9' 11"
Living Dining	4788mm x 5042mm	15' 8" x 16' 6"
WC	2607mm x 1457mm	8' 7" x 5' 0"



First Floor

Bedroom 1	4788mm x 2818mm	15' 8" x 9' 3"
Bedroom 2	2550mm x 4693mm	8' 4" x 15' 4"
Bedroom 3	2150mm x 3612mm	7' 0" x 11' 10"
Bathroom	1928mm x 2094mm	6' 4" x 6' 10"

Please note: dimensions are approximate +/- 50mm and are not intended to be used for carpet sizes, appliance spaces or furniture items.