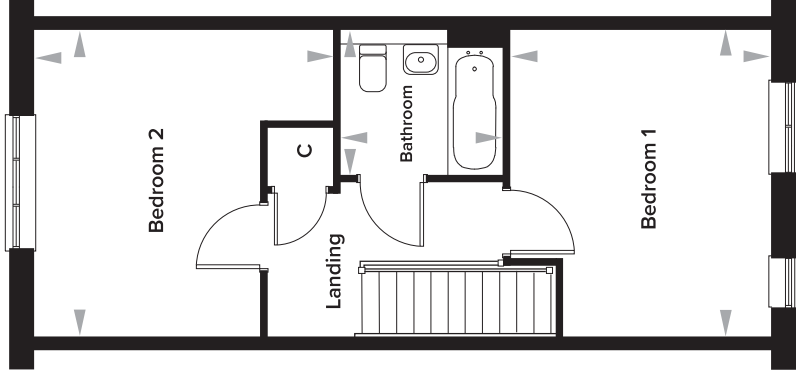
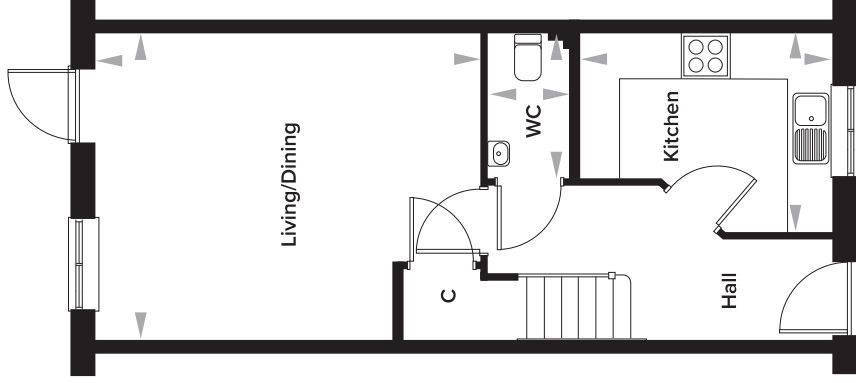


Rosewood, Maidstone, Kent

The Baker 2 Bedroom Mid-Terrace House

Plots 26, 126, 128 and 134



Ground Floor

Kitchen	2637mm x 3350mm	8' 8" x 11' 0"
Living/Dining	4070mm x 5117mm	13' 2" x 16' 9"
WC	1924mm x 1082mm	6' 4" x 3' 7"

First Floor

Bedroom 1	4080mm x 3462mm	13' 5" x 11' 4"
Bedroom 2	4080mm x 3984mm	13' 5" x 13' 0"
Bathroom	1932mm x 2162mm	6' 4" x 7' 1"

Please note: dimensions are approximate +/- 50mm and are not intended to be used for carpet sizes, appliance spaces or furniture items.