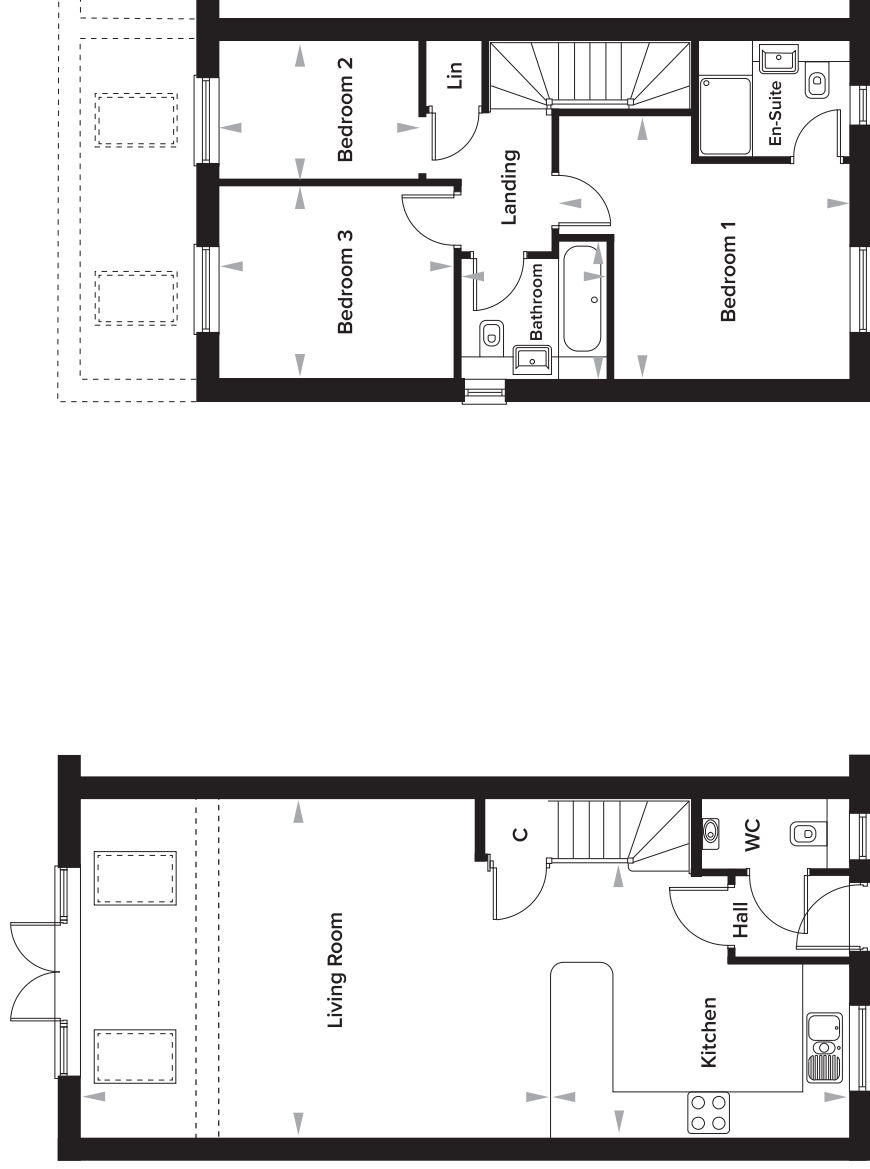


The Burrows, Paddock Wood, Kent

3 Bedroom Semi-Detached House

Plots 110, 112, 114 and 172



Ground Floor

Kitchen	4001mm x 4333mm	13' 2" x 14' 3"
Living Room	4924mm x 6877mm	16' 2" x 22' 7"
WC	1000mm x 2137mm	3' 3" x 7' 0"

First Floor

Bedroom 1	3833mm x 4238mm	12' 7" x 13' 11"
En-Suite	1698mm x 2200mm	5' 7" x 7' 2"
Bedroom 2	2809mm x 3420mm	9' 3" x 11' 3"
Bedroom 3	2022mm x 2909mm	6' 8" x 9' 7"
Bathroom	2000mm x 2124mm	6' 7" x 7' 0"