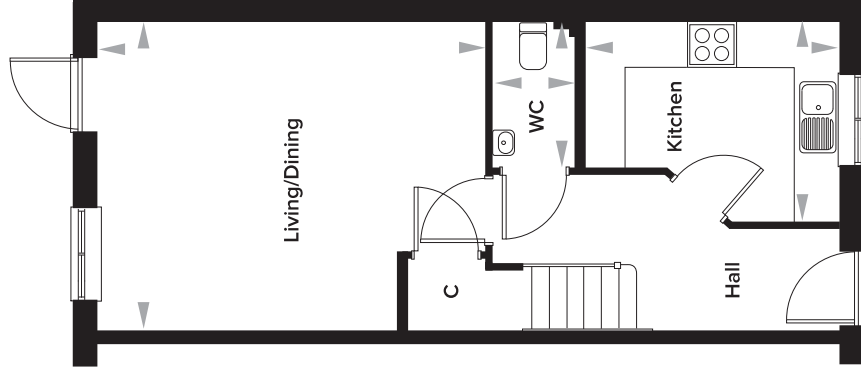


# Oxenden Park, Herne Bay, Kent

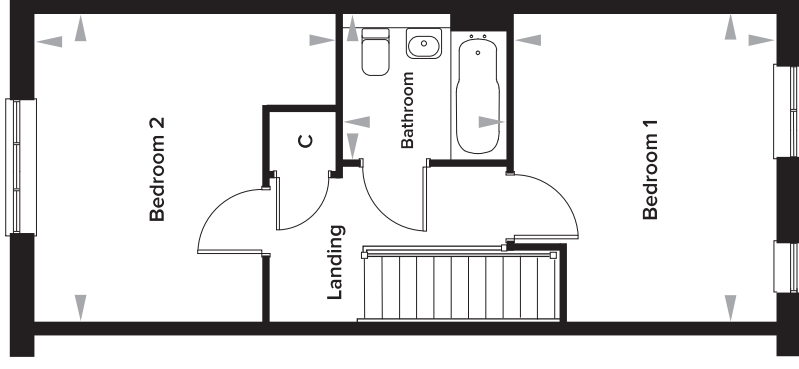
## The Baker 2 Bedroom Semi-Detached House

Plots 119, 129, 165, 167, 261, 401, 403, 405, 414, 420, 430 and 447



### Ground Floor

Kitchen	2647mm x 3360mm	8' 8" x 11' 0"
Living/Dining	3990mm x 5120mm	13' 1" x 16' 9"
WC	1927mm x 1085mm	6' 4" x 3' 7"



### First Floor

Bedroom 1	3990mm x 3460mm	13' 1" x 11' 4"
Bedroom 2	3990mm x 3982mm	13' 1" x 13' 0"
Bathroom	1930mm x 2161mm	6' 4" x 7' 1"