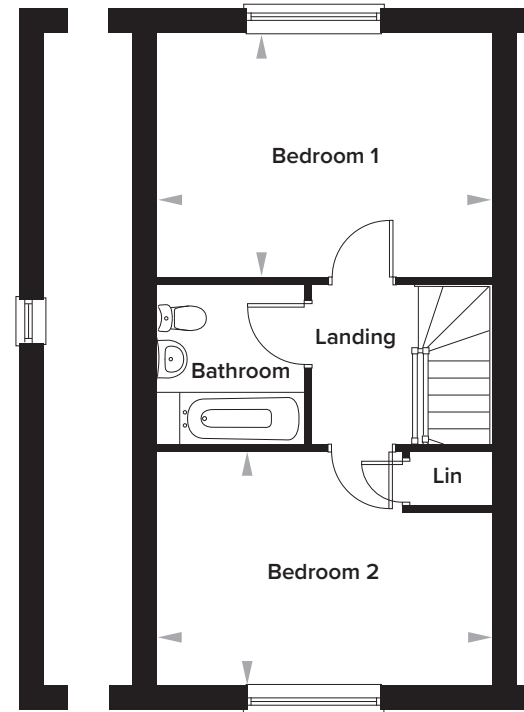
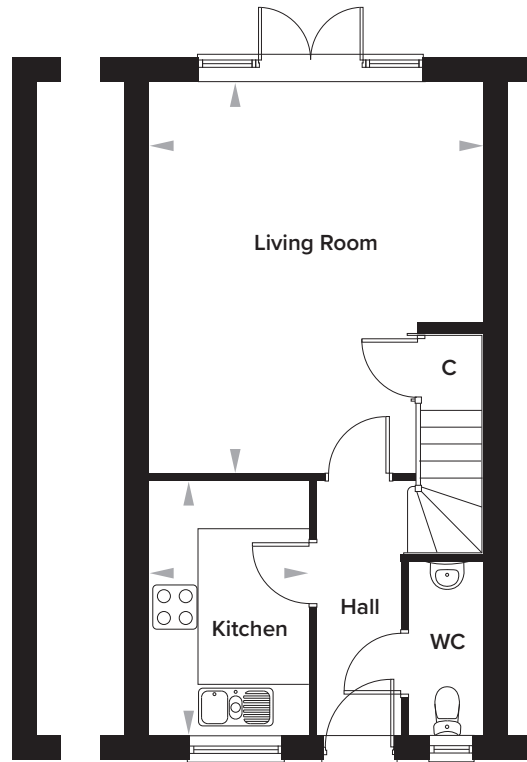


The Burrows, Paddock Wood, Kent

2 Bedroom Terraced House Plots 181, 182, 214, 216, 224, 226, 228, 242, 243, 244 and 245 as shown.
Plots 183, 213, 215, 225, 227, 229 handed



Ground Floor

Kitchen	2140mm x 3360mm	7' 0" x 11' 0"
Living Room	4490mm x 5202mm	14' 9" x 17' 1"
WC	1010mm x 2247mm	3' 4" x 7' 4"

First Floor

Bedroom 1	4490mm x 3929mm	14' 9" x 12' 11"
Bedroom 2	4490mm x 3090mm	14' 9" x 10' 2"
Bathroom	2000mm x 2140mm	6' 7" x 7' 0"