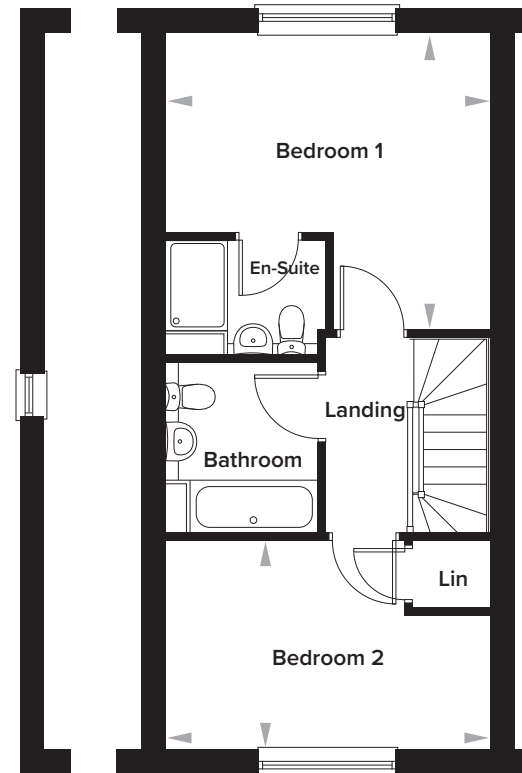
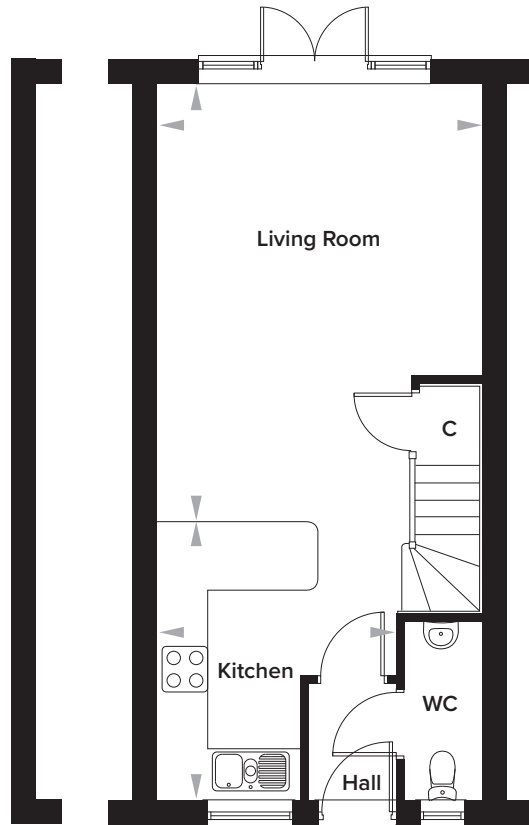


The Burrows, Paddock Wood, Kent

2 Bedroom Terraced House

Plots 147 and 150. Plots 148, 149 and 151 handed



Ground Floor

Kitchen	3092mm x 3610mm	10' 2" x 11' 10"
Living Room	4208mm x 5720mm	13' 10" x 18' 9"
WC	1000mm x 2315mm	3' 3" x 7' 7"

First Floor

Bedroom 1	4208mm x 3856mm	13' 10" x 12' 8"
En-Suite	2095mm x 1540mm	6' 10" x 5' 1"
Bedroom 2	4208mm x 2699mm	13' 10" x 8' 10"
Bathroom	2000mm x 2250mm	6' 7" x 7' 5"