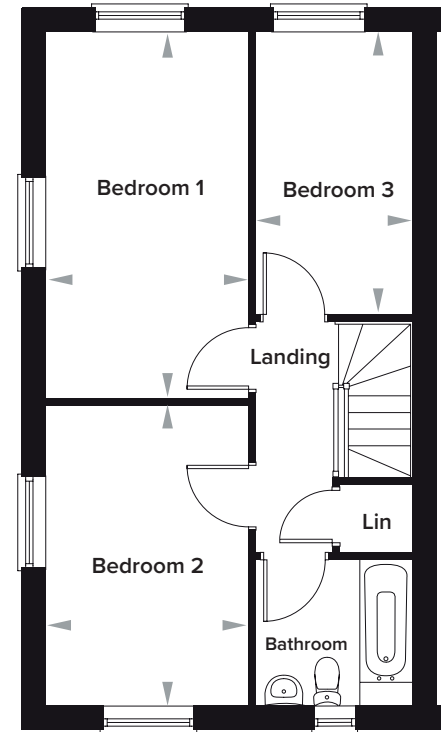
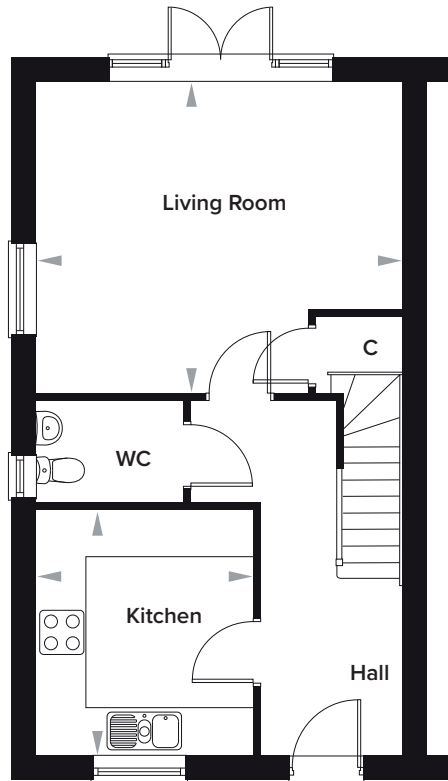


# The Burrows, Paddock Wood, Kent

## 3 Bedroom Semi-Detached and End of Terrace Houses

Plot 138 as shown. Plots 139 and 211 (EOT) handed

---



---

### Ground Floor

Kitchen	2930mm x 3360mm	9' 7" x 11' 0"
Living Room	4996mm x 4252mm	16' 5" x 13' 11"
WC	2010mm x 1410mm	6' 7" x 4' 8"

### First Floor

Bedroom 1	2753mm x 5005mm	9' 0" x 16' 5"
Bedroom 2	2753mm x 4096mm	9' 0" x 13' 5"
Bedroom 3	2110mm x 3868mm	6' 11" x 12' 8"
Bathroom	2150mm x 2000mm	7' 0" x 6' 7"