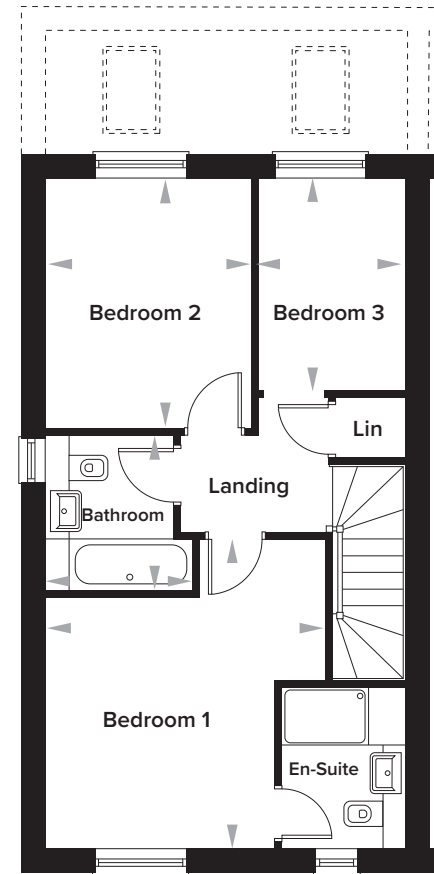
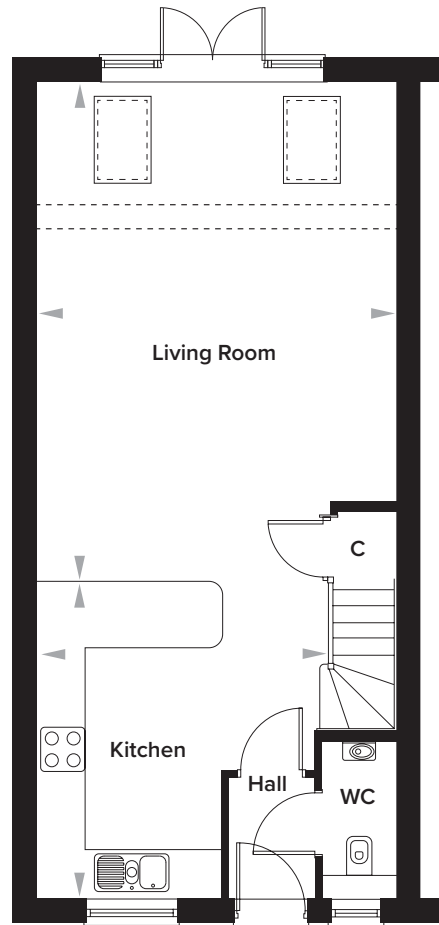


The Burrows, Paddock Wood, Kent

3 Bedroom Semi-Detached House

Plots 110, 112, 114, 143, 145, 172 and 152 as shown. Plots 111, 113, 115, 144, 146, 153 and 173 handed



Ground Floor

Kitchen	3961mm x 4293mm	13' 0" x 14' 1"
Living Room	4884mm x 6837mm	16' 0" x 22' 5"
WC	1000mm x 2137mm	3' 3" x 7' 0"

First Floor

Bedroom 1	3793mm x 4198mm	12' 5" x 13' 9"
En-Suite	1698mm x 1342mm	5' 7" x 4' 5"
Bedroom 2	2769mm x 3380mm	9' 1" x 11' 1"
Bedroom 3	1982mm x 2869mm	6' 6" x 9' 5"
Bathroom	2124mm x 2000mm	7' 0" x 6' 7"