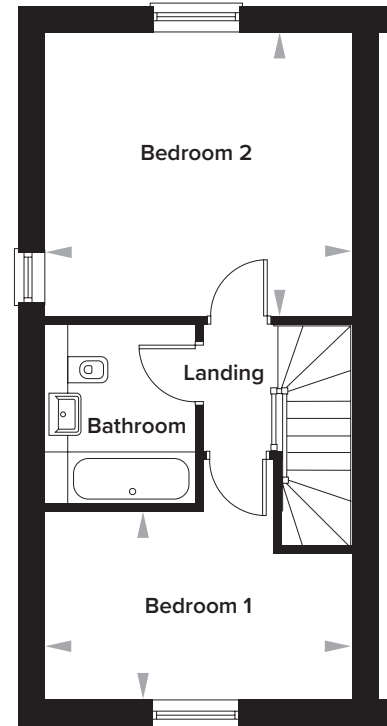
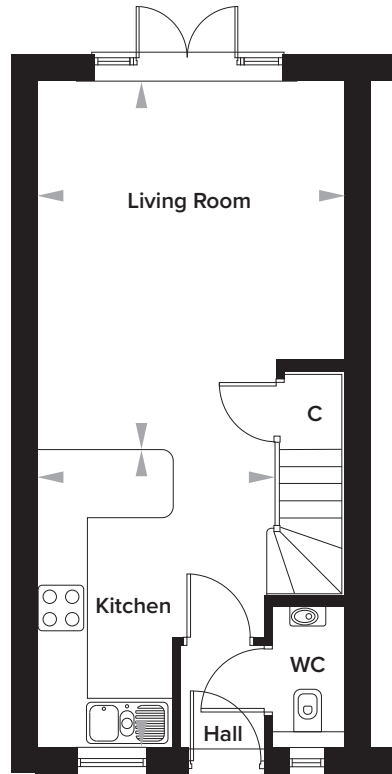


The Burrows, Paddock Wood, Kent

2 Bedroom Semi-Detached House

Plots 106, 108 and 192 as shown. Plots 193, 107 and 109 handed



Ground Floor

| | | |
|-------------|-----------------|------------------|
| Kitchen | 3135mm x 3910mm | 10' 3" x 12' 10" |
| Living Room | 4040mm x 4858mm | 13' 3" x 15' 11" |
| WC | 960mm x 1920mm | 3' 2" x 6' 4" |

First Floor

| | | |
|-----------|-------------------|-----------------|
| Bedroom 1 | 13' 3"mm x 2450mm | 13' 5" x 8' 0" |
| Bedroom 2 | 13' 3"mm x 3731mm | 13' 5" x 12' 3" |
| Bathroom | 2000mm x 2390mm | 6' 7" x 7' 10" |